

Public Open House #2
January 30, 2020
6:00 pm – 8:00 pm

Centre Wellington

Cultural Heritage Landscape Study

With:
Fotenn Consultants Inc.
Landplan Studio Inc.



Project Purpose and Scope

- To identify, evaluate, inventory, and map significant Cultural Heritage Landscapes within the Township
- To provide recommendations on priorities for conservation and further study
- To engage the community to determine which landscapes within the Township are valued





What is a Cultural Heritage Landscape?

“a defined geographical area that may have been modified by human activity and is identified as having cultural heritage value or interest by a community, including an Aboriginal community.” (PPS 2014)



Designed

Garden at Fulford Place,
Brockville



Evolved

Scotsdale Farm, Halton Hills



Associative

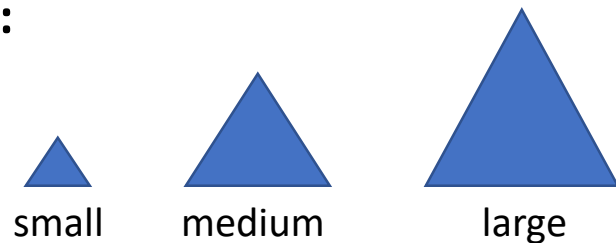
Kay-Nah-Chi-Wah-Nung,
Manitou Mounds, Stratton



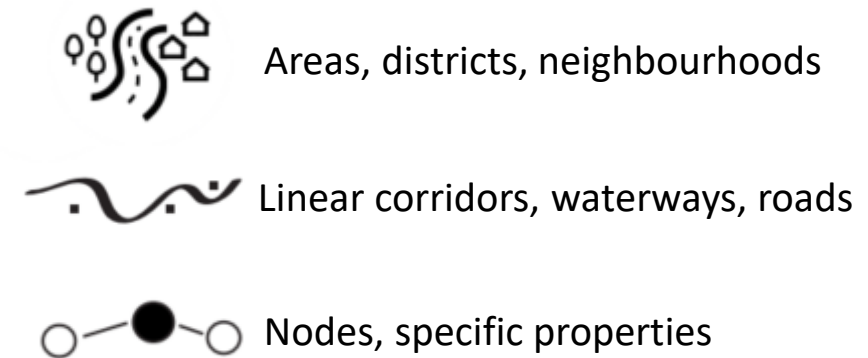
What is a Cultural Heritage Landscape?

- Involves a grouping(s) of individual heritage features such as structures, spaces, archaeological sites and natural elements, which together form a significant type of heritage form, distinctive from that of its constituent elements or parts
- The whole is greater than the sum of its parts in many cases; it is the *area* or *place* that is of some interest as opposed to individual elements

Scale:



Pattern:





Why Identify and Manage CHLs?

- These spaces, corridors and complexes:
 - Are hallmarks of a municipality.
 - Contribute to the 'character' of a community.
 - Places for tourism, environmental stewardship, recreation, and community collaboration.



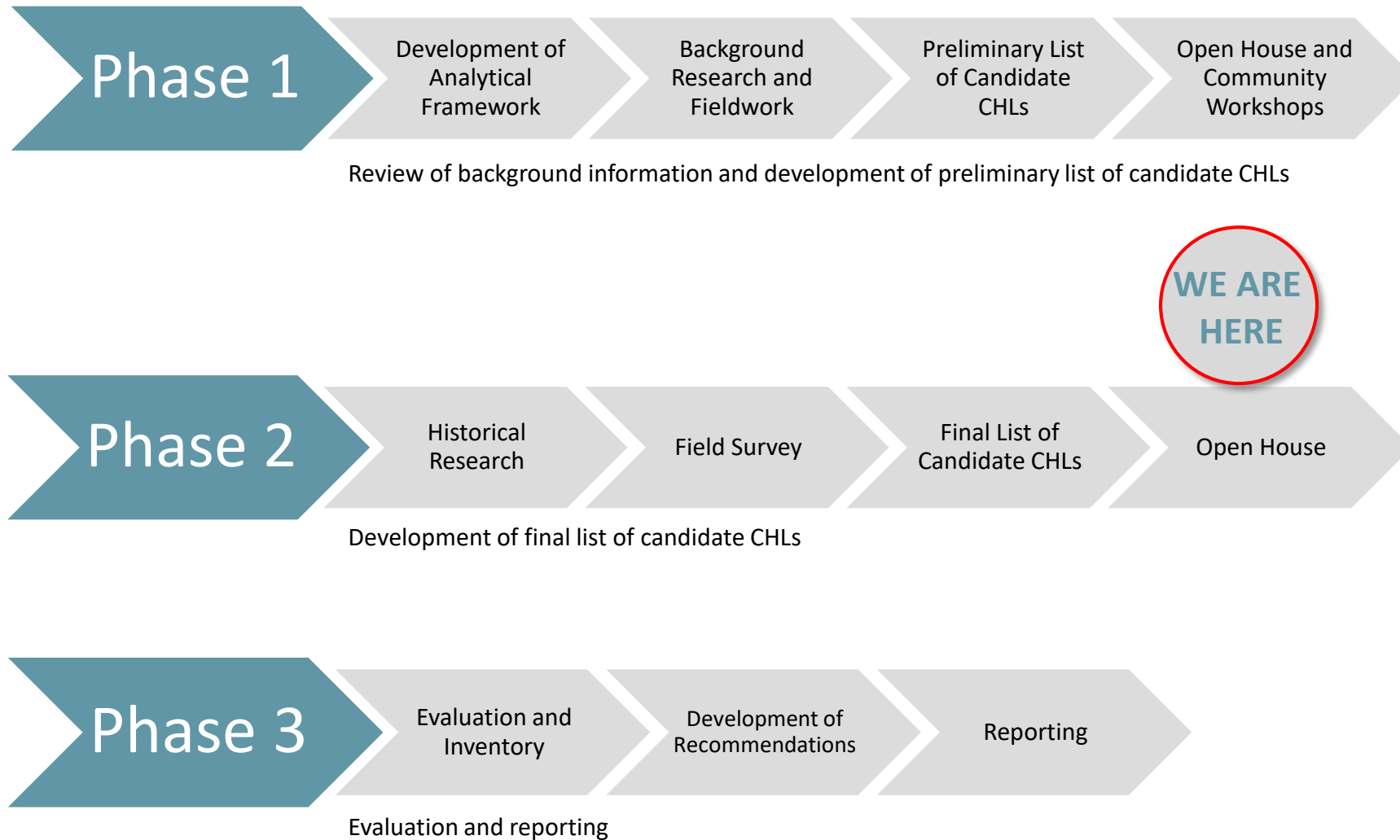
Templin Gardens



Wellington County Museum & Archives

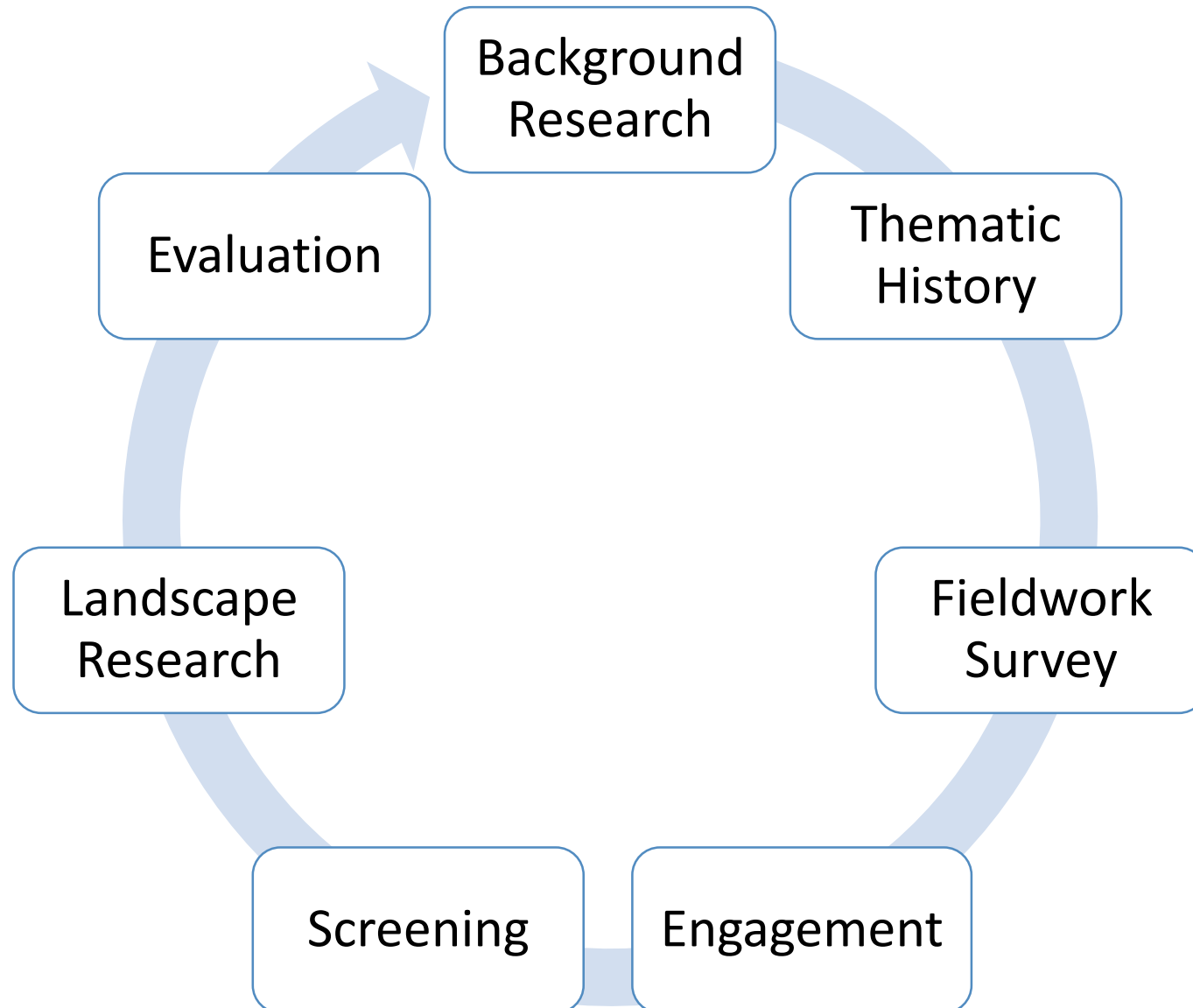


Project Schedule





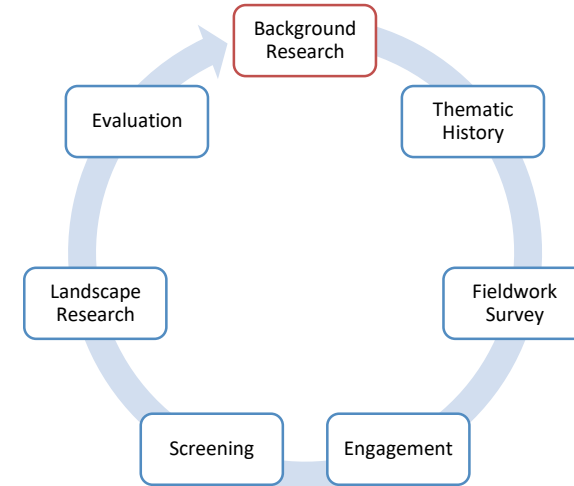
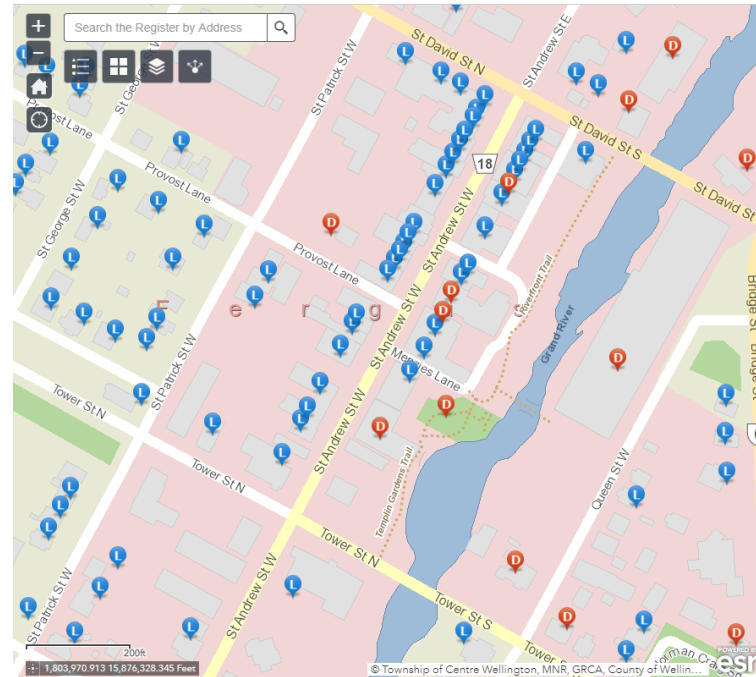
Methodology





Background Research

- Consulted federal, provincial, and municipal databases and/or agencies
- Understand specific properties or areas previously identified by the Township as potential candidate cultural heritage landscapes

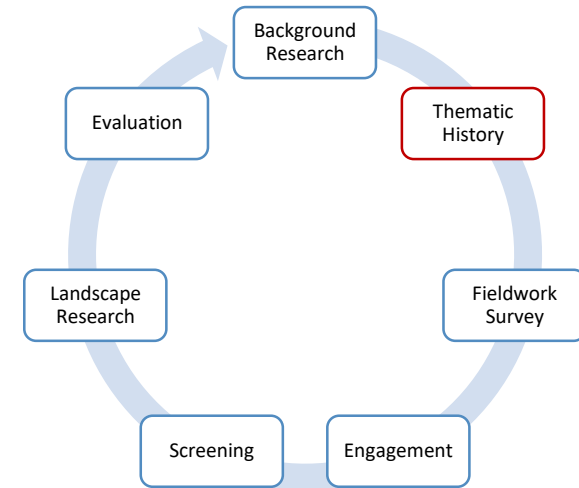




Thematic History

For entire Township of Centre Wellington, review of:

- Historical mapping and aerial photographs
- Primary and secondary source materials
- Topography and physiography
- Natural environment, vegetation, and trees

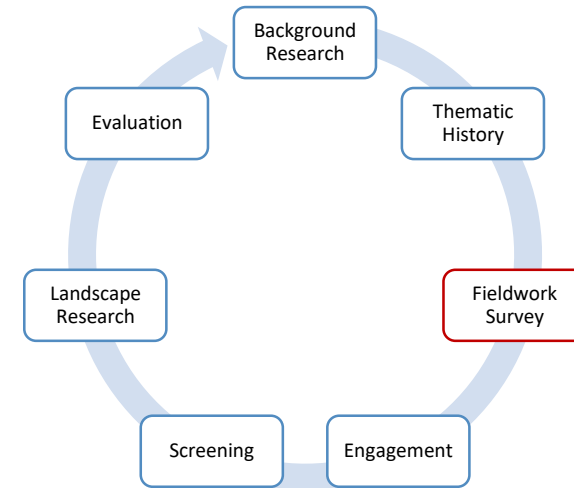




Fieldwork Survey

Collected information on:

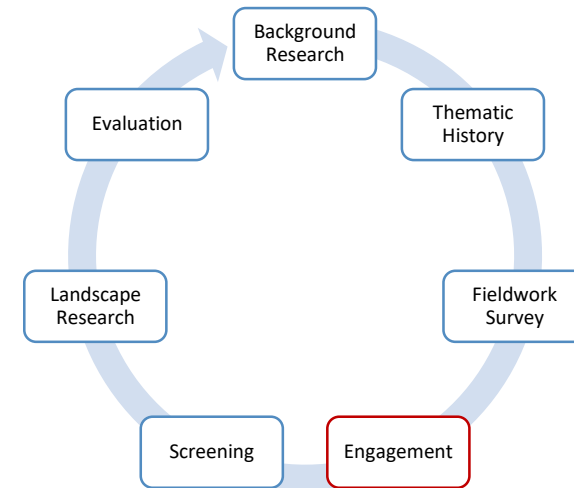
- Boundary and Feature Demarcations
- Built Features
- Circulation
- Ecological/Natural Features
- Evidence of Traditional Practices
- Land Patterns
- Land Use
- Landforms
- Landmarks
- Open Space
- Public Access
- Sense of Place
- Scenic Amenity
- Spatial Organization
- Views & Visual Relationships
- Vegetation
- Water Features





Engagement Strategy

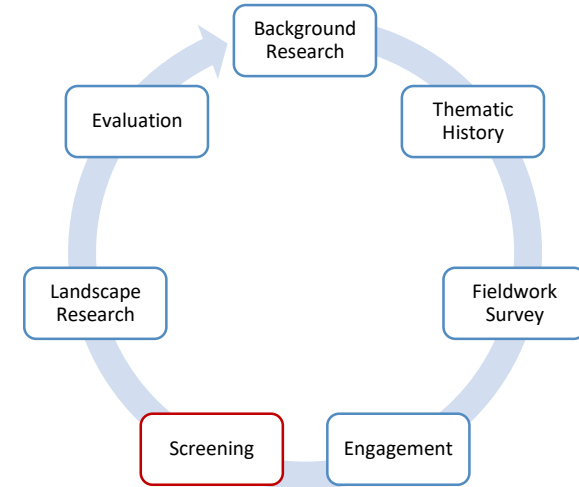
- Project website – launched in July 2019
 - Mapping of potential CHLs
 - Survey
 - Study updates
- Public Open House #1 – September 26, 2019
 - GOAL: To inform the public about the study process and scope, and gather input about issues and opportunities that relate to the public's interest
- Mapping Sessions – October 5, 2019
 - GOAL: To gather input on potential candidate CHLs that are important to the community
- Public Open House #2 – January 30, 2020
 - GOAL: To share the list of candidate CHLs with the public for feedback
- Continued outreach by the Township project team
 - Radio interviews
 - Presentation to youth group
 - Outreach to individuals, groups, organizations
- Continued Indigenous engagement





Screening Methodology

- Areas that correspond to the **historic themes and associations** important to the development of the Township;
- Areas that contain a **grouping of cultural heritage resources** identified through a **visual survey**;
- Landscapes **valued by a community** suggested by the public through consultations or in written documents such as local histories, planning documents, listings of important landscapes, etc.

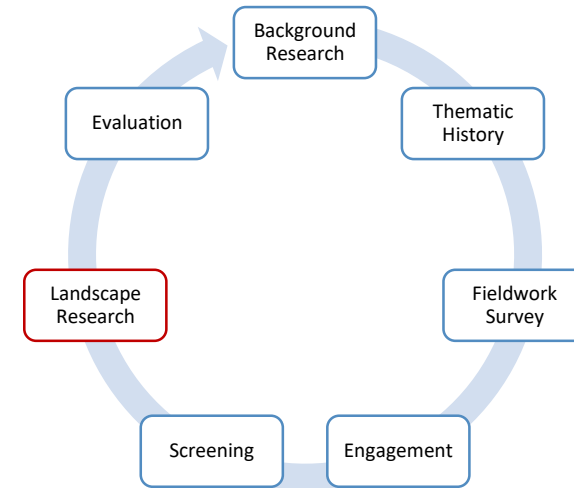




Landscape Research

For individual landscapes, review of:

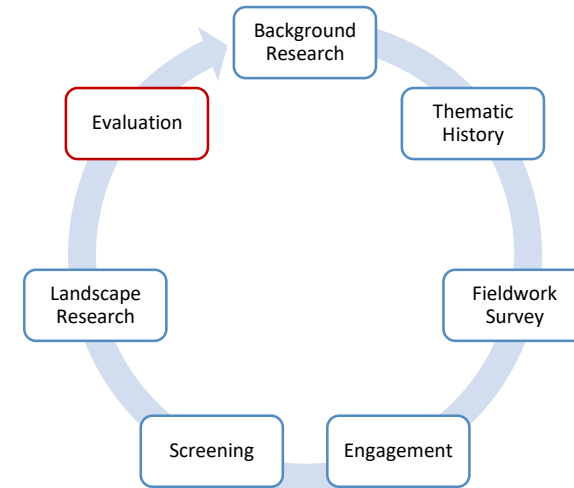
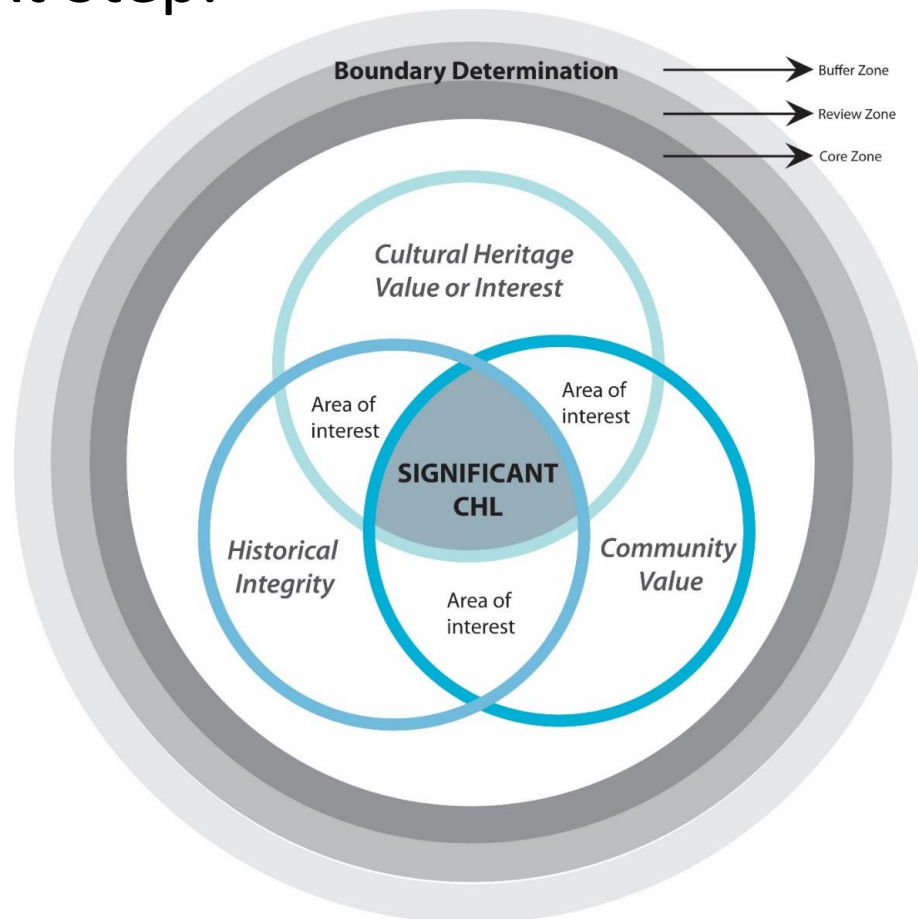
- Historical mapping and aerial photographs
- Primary and secondary source materials
 - Heritage reports
 - Books
 - Journal articles
 - Township and reputable websites
 - Archives of Ontario
 - Wellington County Museum and Archives
- Consultation with archivists and librarians
- Community members and historians





Evaluation Methodology

Next Step:





Candidate Cultural Heritage Landscapes



Grand River

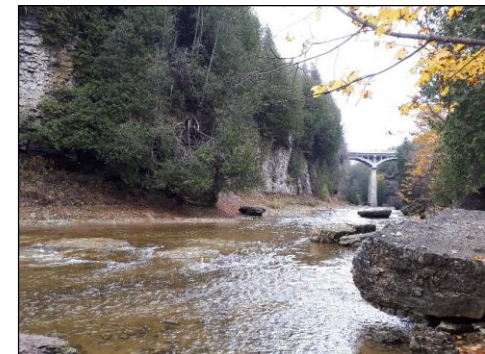
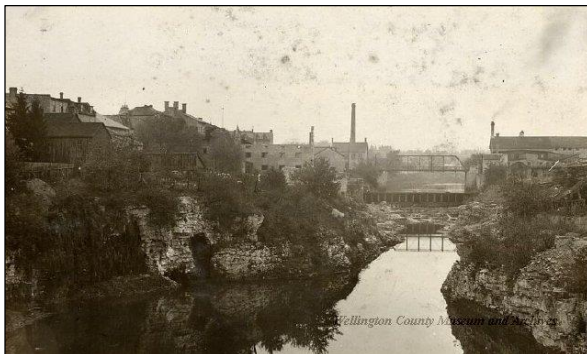
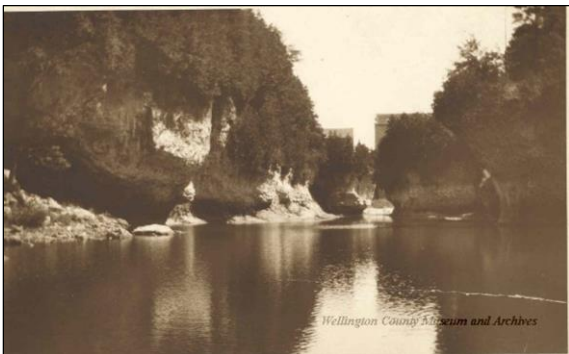
Associated Historical Themes: Nature, Settlement, Urban Development, Industry, Transportation, Community Development

Spatial Pattern Type: 

Scale: Large

UNESCO Category:
Evolved – Continuing; Associative

Heritage Recognition: Canadian
Heritage River

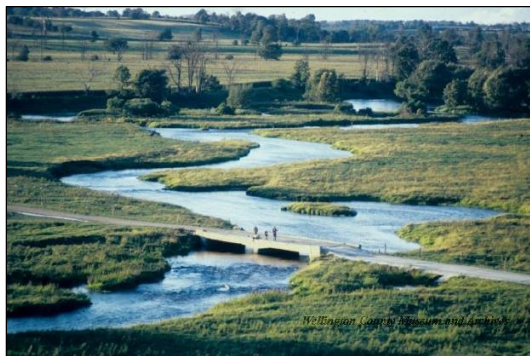




Grand River

Associated Historical Themes: Settlement, Nature, Community Development

Wilson's Flats Area

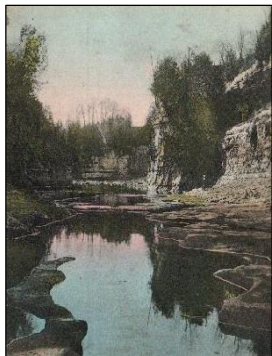




Grand River

Associated Historical Themes: Nature, Community Development

Elora Gorge

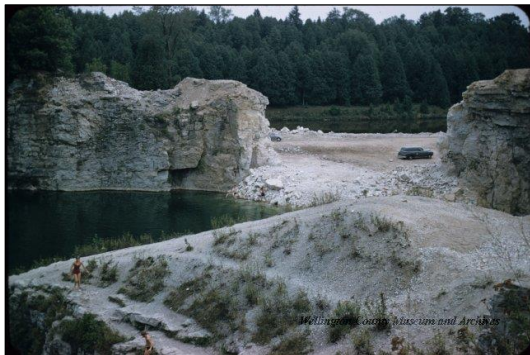




Grand River

Associated Historical Themes: Industry, Community Development

Elora Quarry

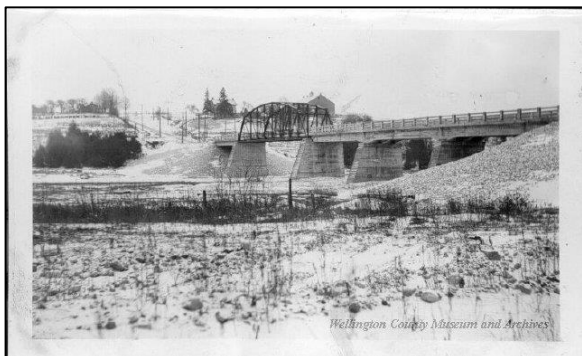
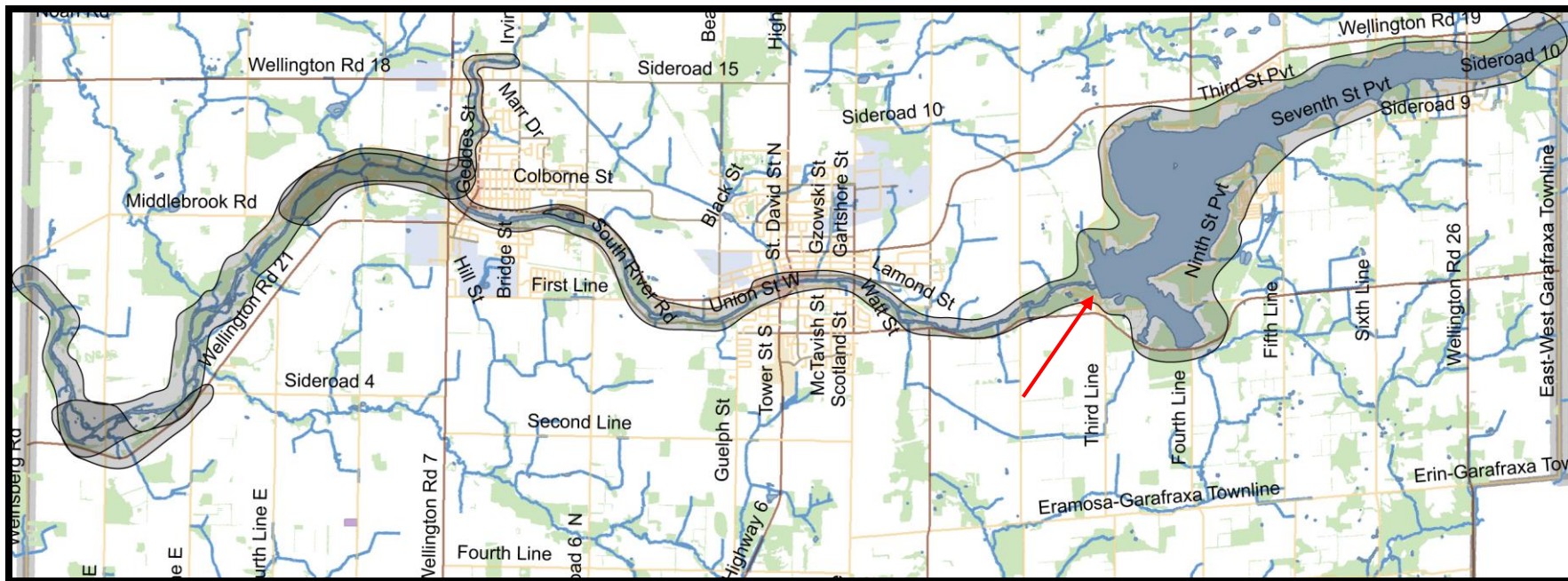




Grand River

Associated Historical Themes: Urban Development (infrastructure), Nature, Settlement

Shand Dam & Belwood Lake





Elora Cataract Trailway

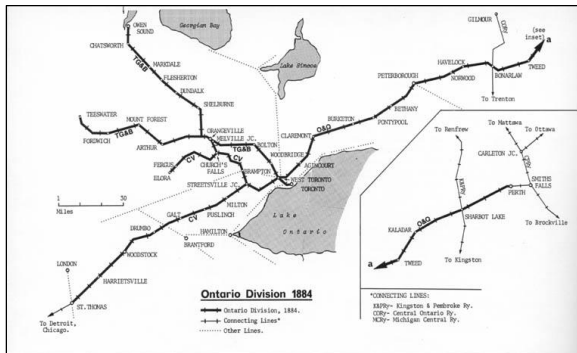
Associated Historical Themes: Transportation, Nature

Spatial Pattern Type: 

Scale: Medium

UNESCO Category:
Evolved – Continuing

Heritage Recognition: None

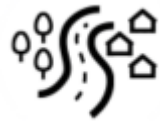




Historic Belwood

Associated Historical Themes: Settlement

Spatial Pattern Type:

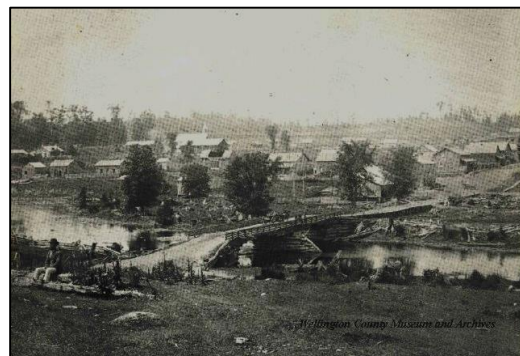
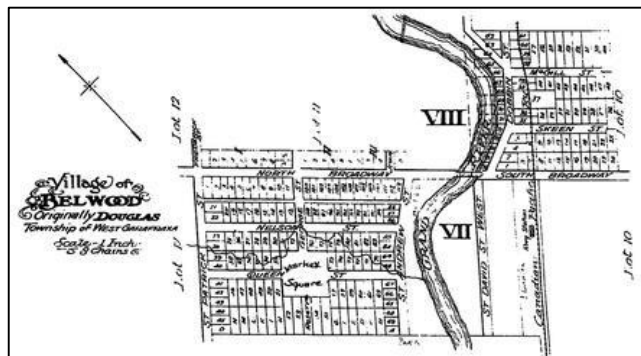
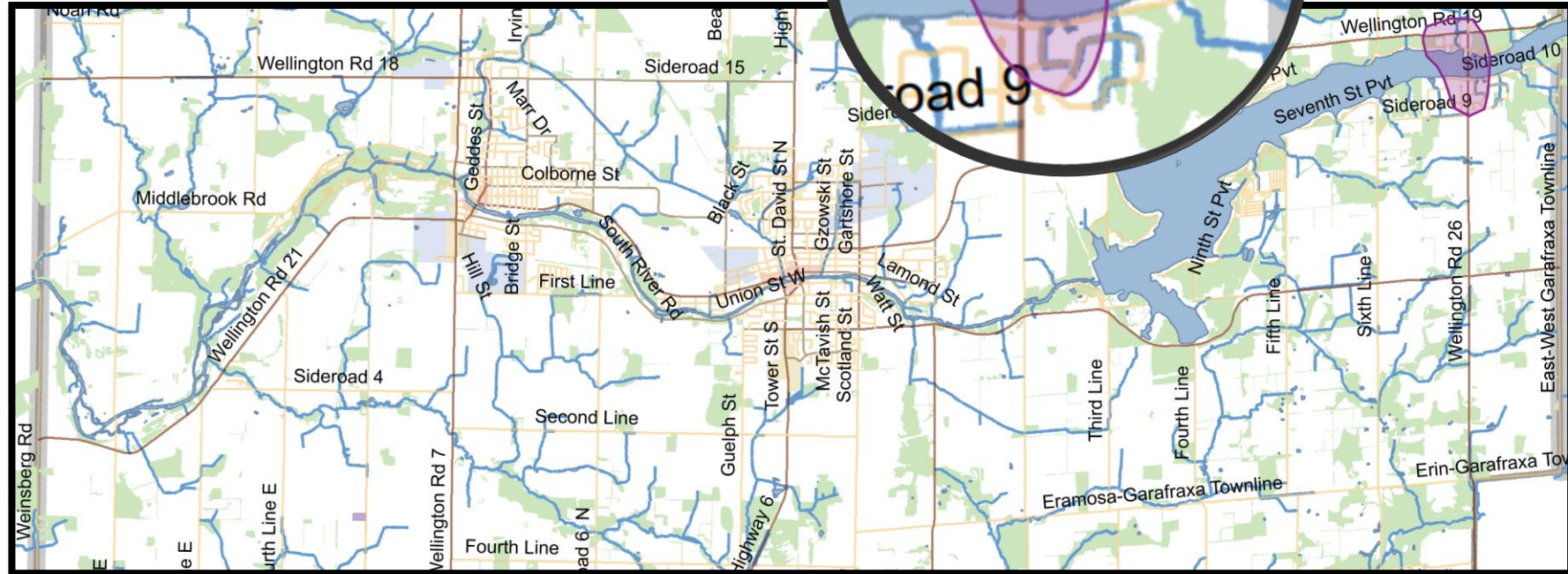


Scale: Medium

UNESCO Category:

Evolved – Continuing

Heritage Recognition: None





South River Road

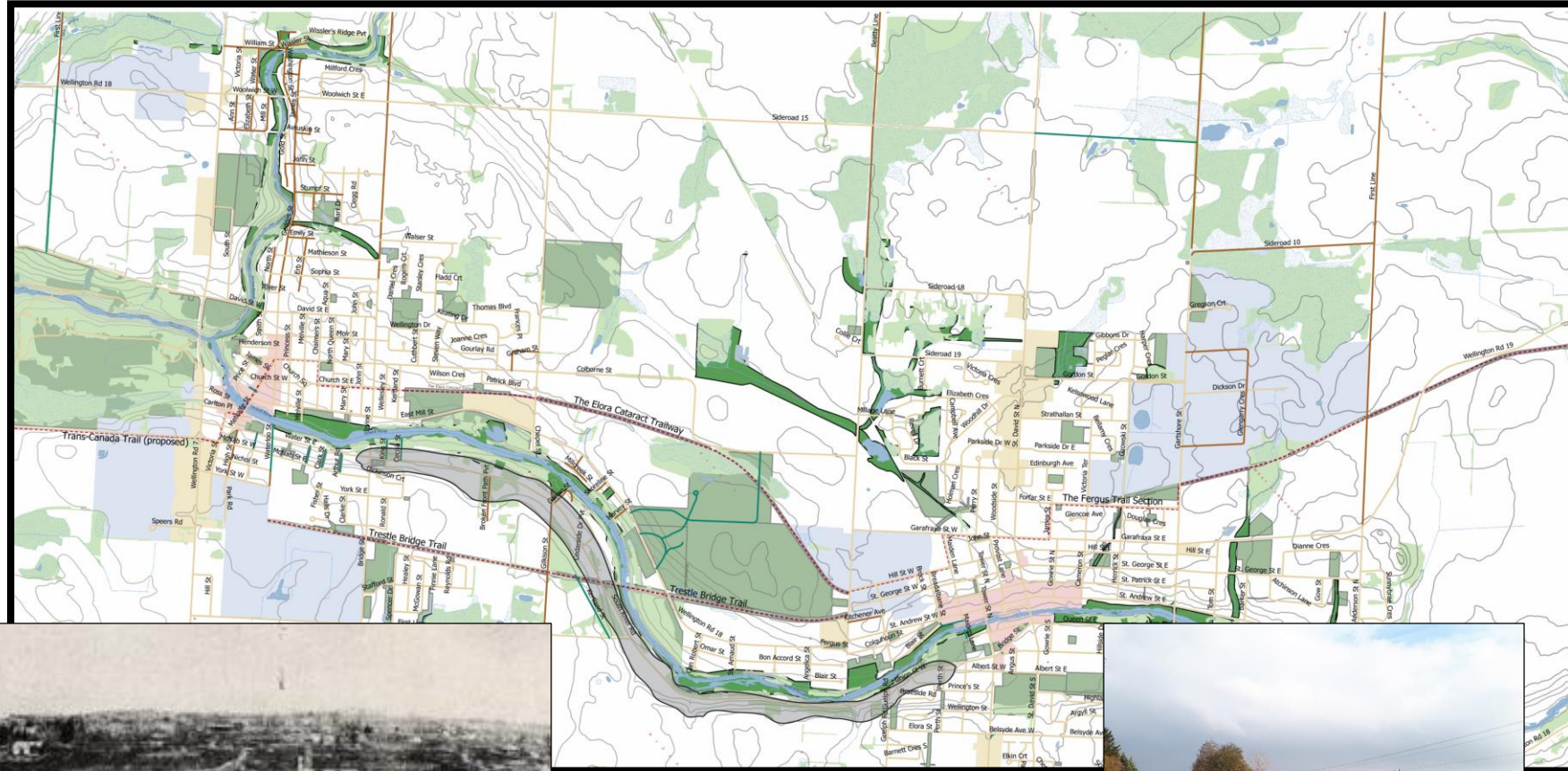
Associated Historical Themes: Settlement, Transportation, Nature, Agriculture

Spatial Pattern Type: 

Scale: Medium

UNESCO/OHT Category: Evolved – Continuing

Heritage Recognition: Some listed or designated properties along South River Road





Trestle Bridge Trailway

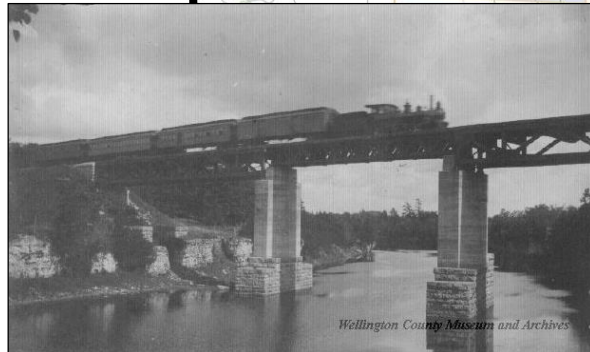
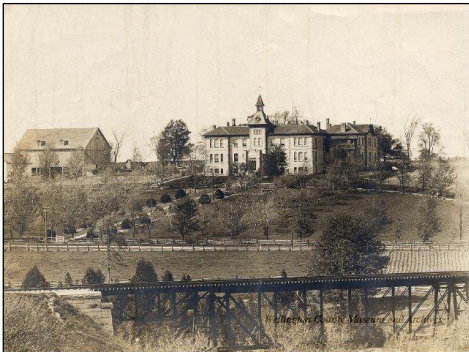
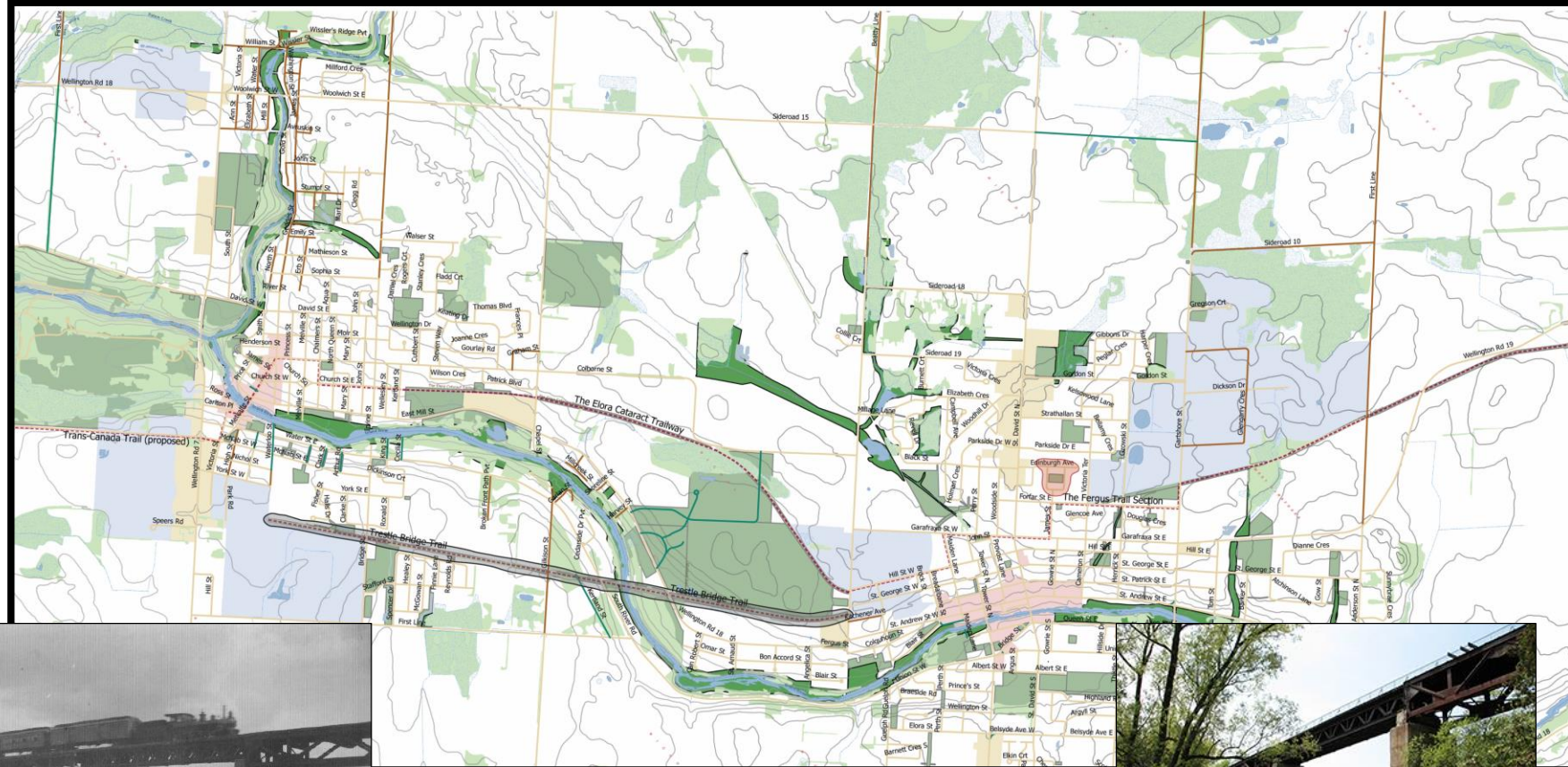
Associated Historical Themes: Transportation, Nature

Spatial Pattern Type: 

Scale: Medium

UNESCO Category:
Evolved – Continuing

Heritage Recognition: None





Salem

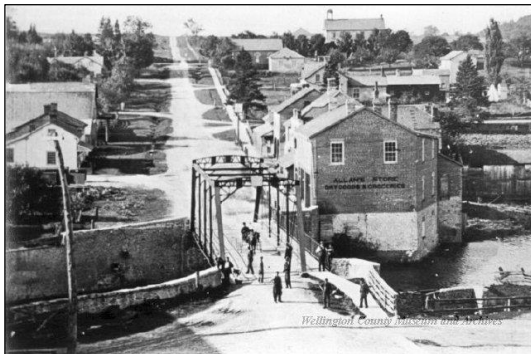
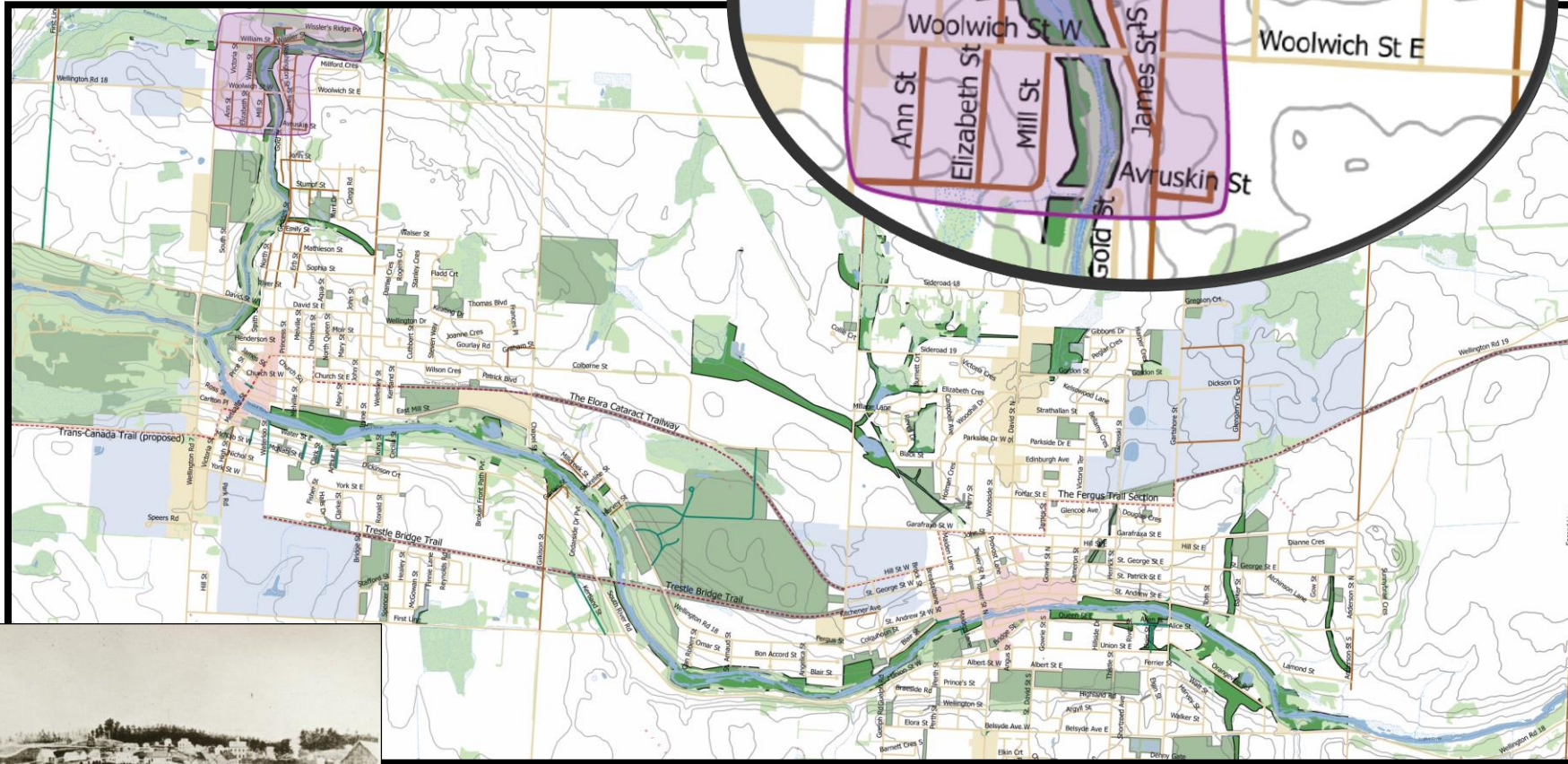
Associated Historical Themes: Settlement

Spatial Pattern Type: 

Scale: Medium

UNESCO Category:
Evolved – Continuing

Heritage Recognition: Some listed
and designated properties





Elora/St. Mary's Cemetery

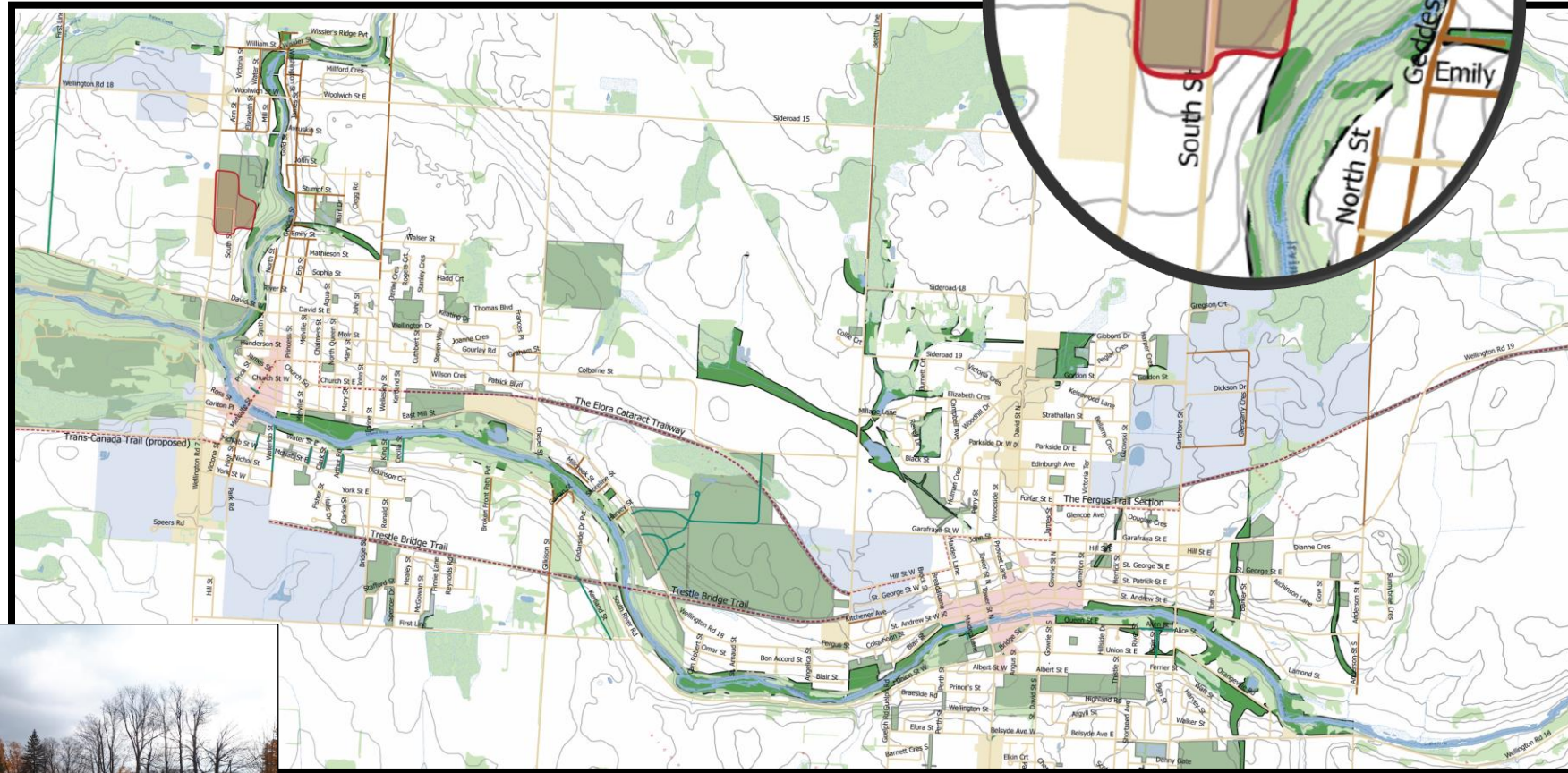
Associated Historical Themes: Settlement, Community Development

Spatial Pattern Type: 

Scale: Small

UNESCO: Designed

Heritage Recognition: Listed





Victoria Park & Victoria Cres. Neighbourhood

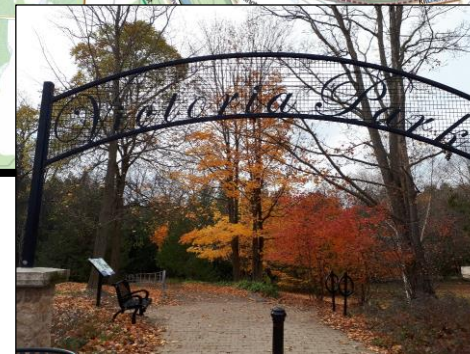
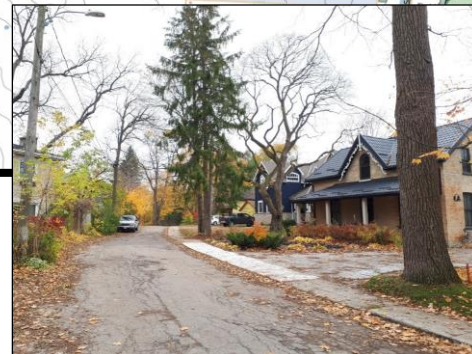
Associated Historical Themes: Nature, Urban Development, Community Development

Spatial Pattern Type: 

Scale: Medium

UNESCO Category:
Evolved – Continuing

Heritage Recognition: Some
properties listed or designated





Downtown Elora

Associated Historical Themes: Settlement, Urban Development, Transportation, Industry, Community Development, Arts and Culture

Spatial Pattern Type: 

Scale: Medium

UNESCO Category:
Evolved – Continuing

Heritage Recognition: Some listed and designated properties





Aboyne & Allan Farmstead

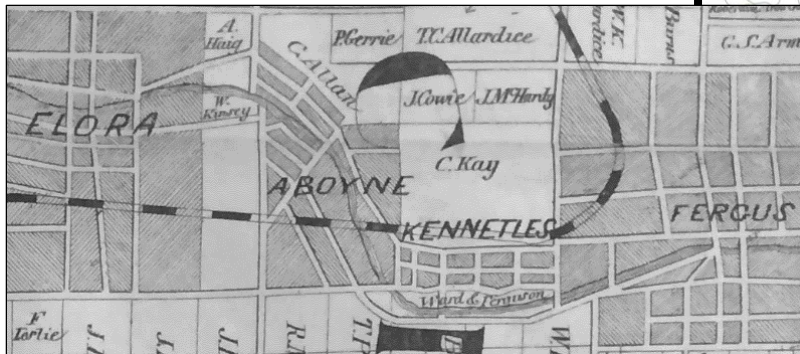
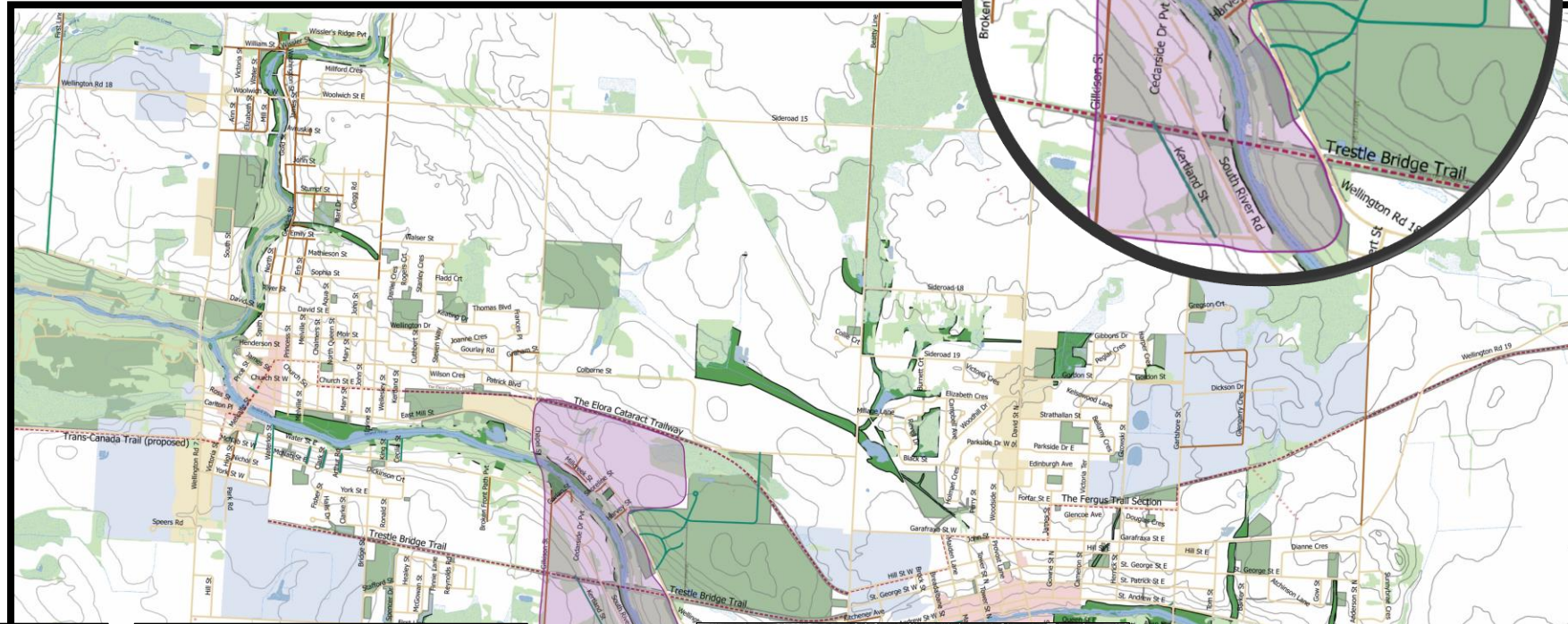
Associated Historical Themes: Settlement, Agriculture, Transportation, Nature

Spatial Pattern Type: 

Scale: Medium

UNESCO Category:
Evolved – Continuous and Relict

Heritage Recognition: Some listed and designated properties throughout





Beatty Brothers Factory & Residential Area

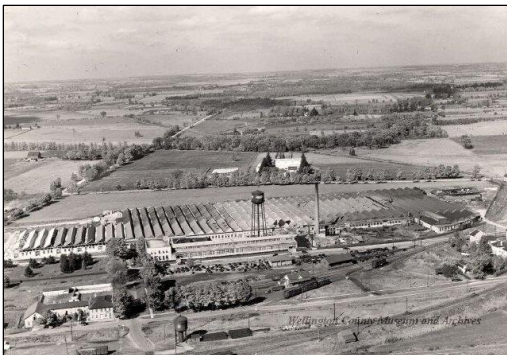
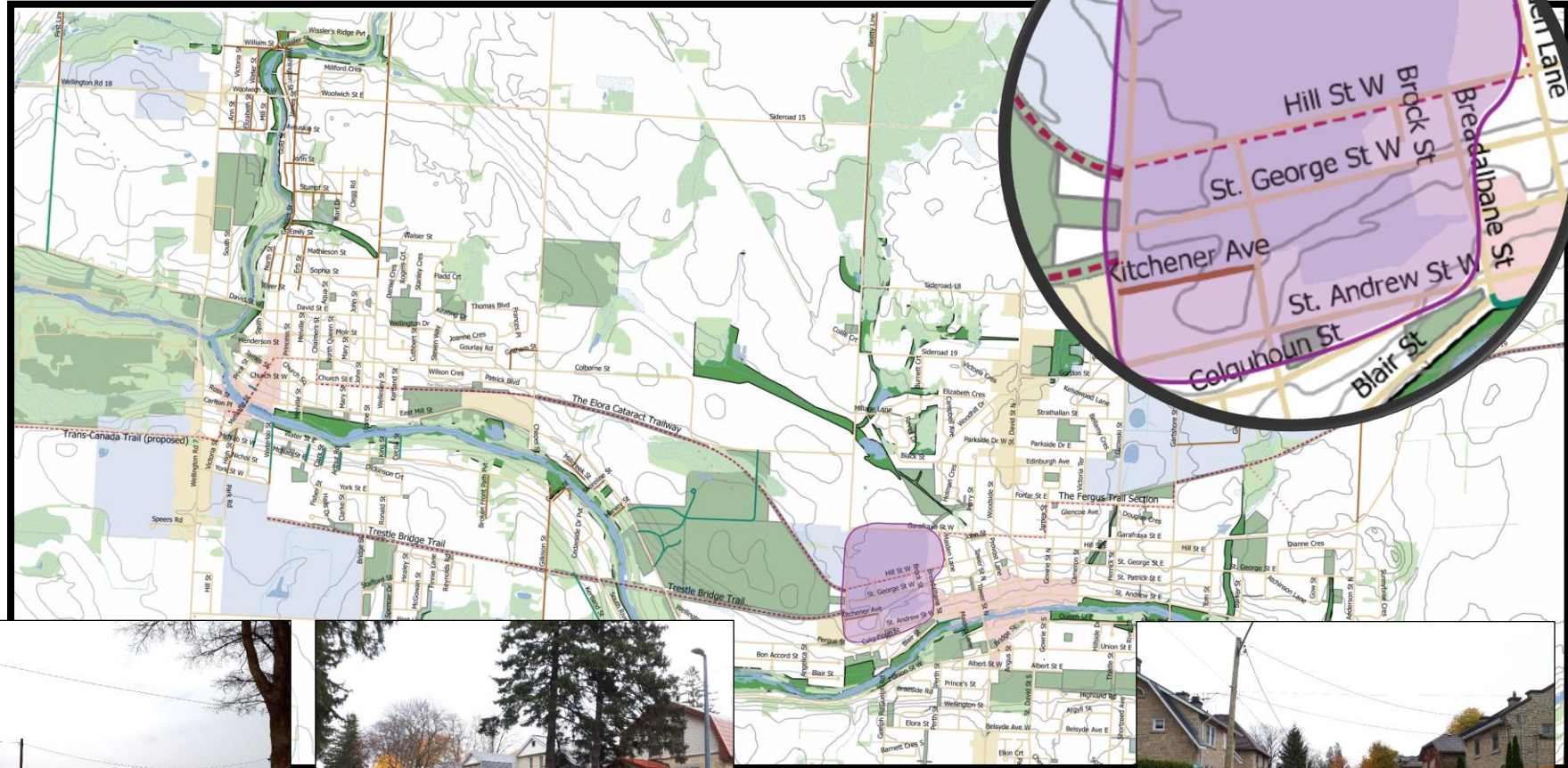
Associated Historical Themes: Urban Development, Community Development, Industry

Spatial Pattern Type: 

Scale: Medium

UNESCO Category: Designed

Heritage Recognition: Brock Street
HCD, Factory Part IV Designated,
some listed properties





Downtown Fergus

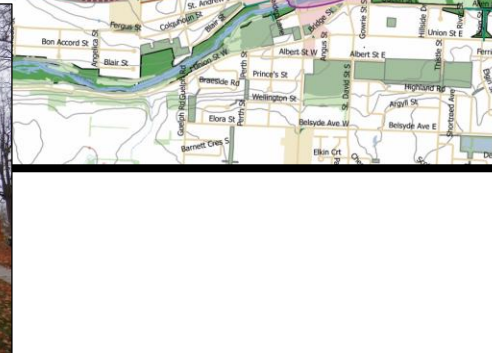
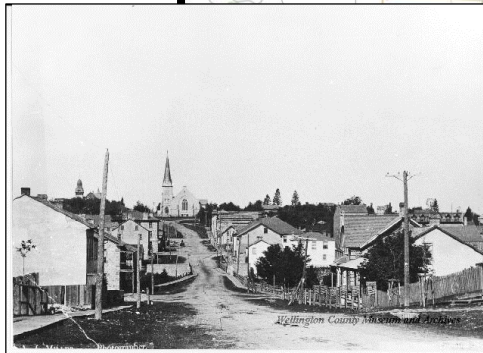
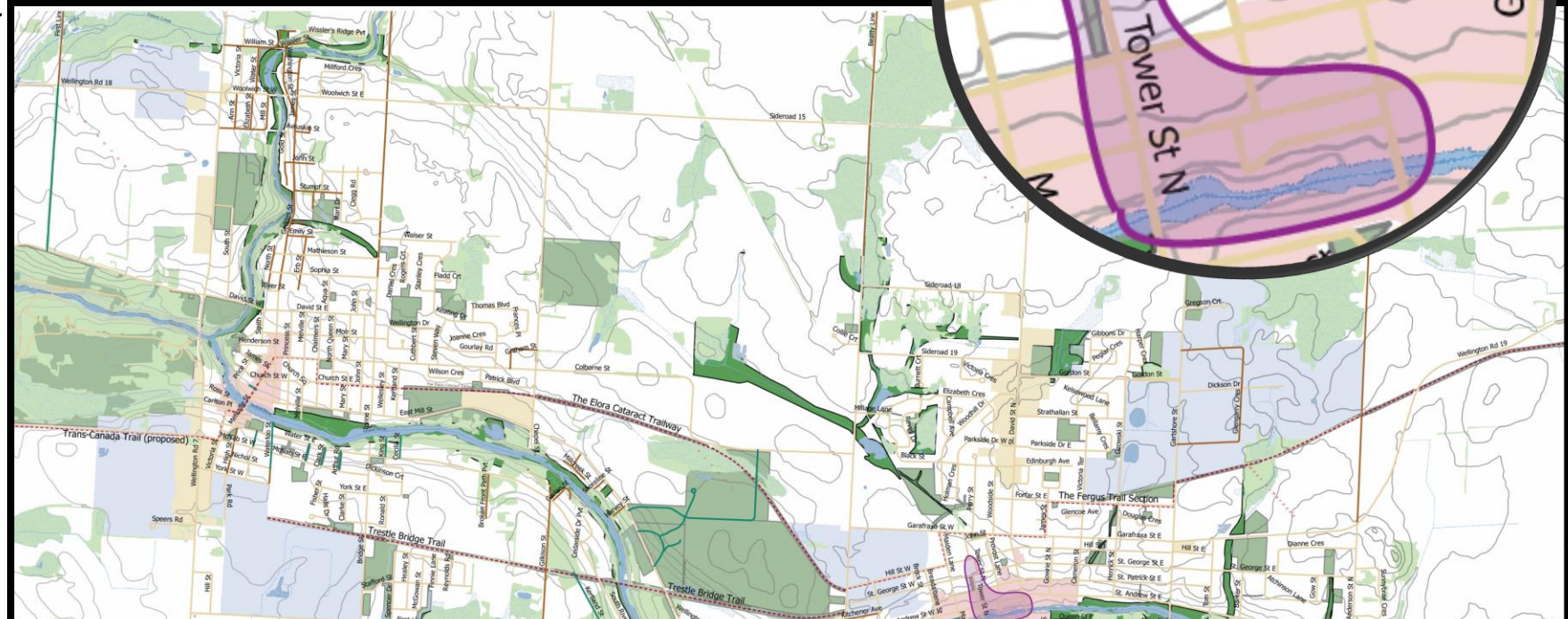
Associated Historical Themes: Settlement, Urban Development, Transportation, Industry, Community Development

Spatial Pattern Type: 

Scale: Medium

UNESCO Category: Designed and Evolved – Continuing

Heritage Recognition: Some listed and designated properties





Union Street East, Fergus

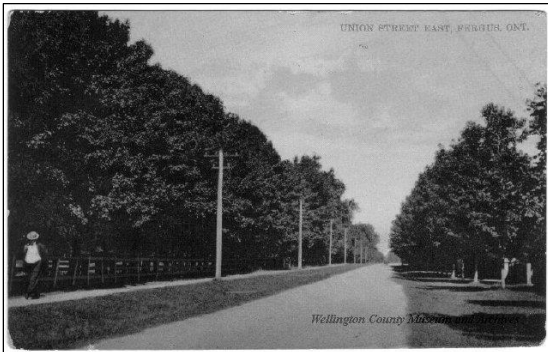
Associated Historical Themes: Settlement, Urban Development

Spatial Pattern Type: 

Scale: Small

UNESCO Category: Evolved - Continuous

Heritage Recognition: Some listed and designated properties





Highland Park, Victoria Park & Belsyde Cemetery

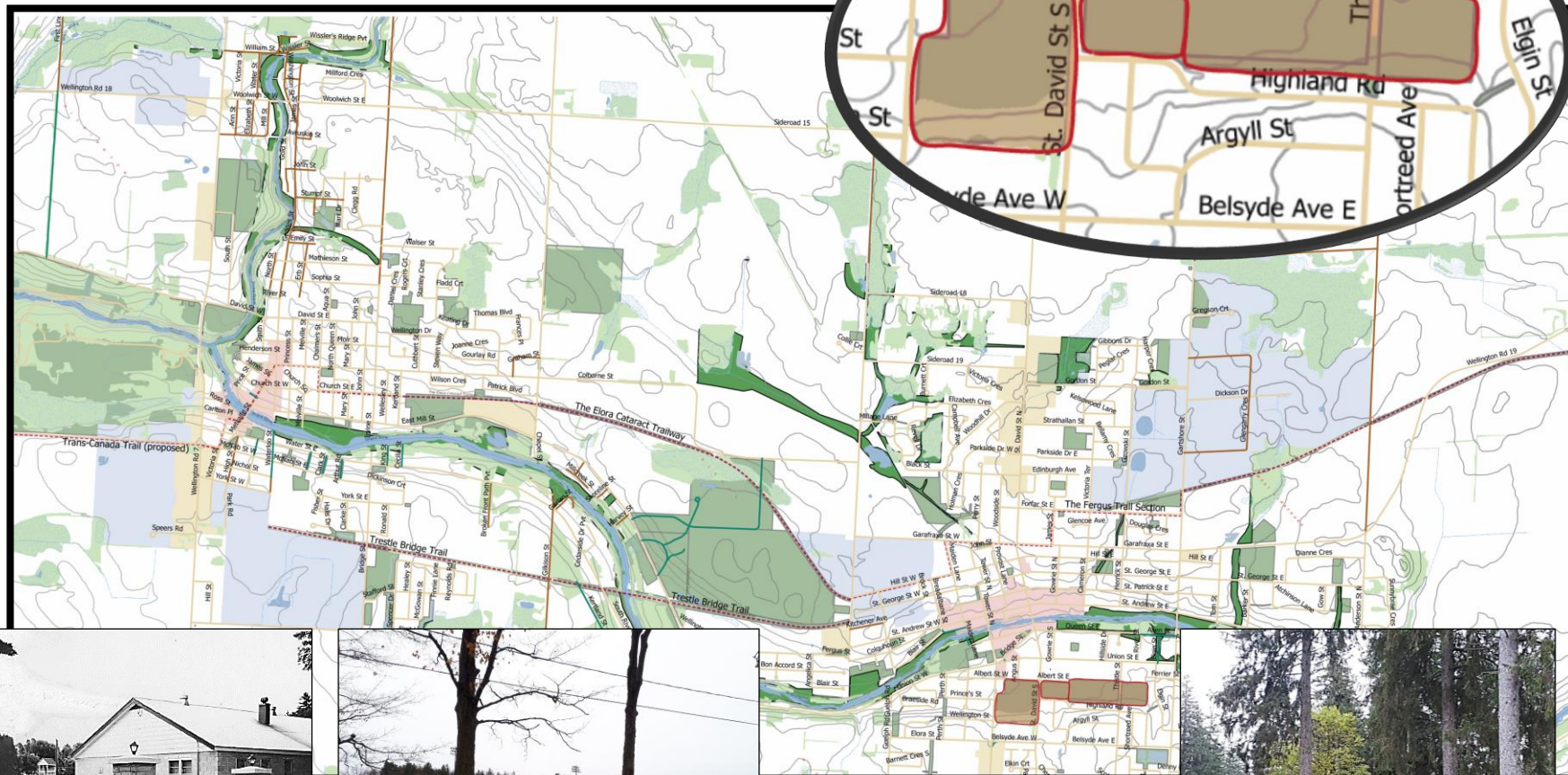
Associated Historical Themes: Settlement, Community Development

Spatial Pattern Type:

Scale: Small

UNESCO Category: Designed

Heritage Recognition: None





Victory Housing, Fergus

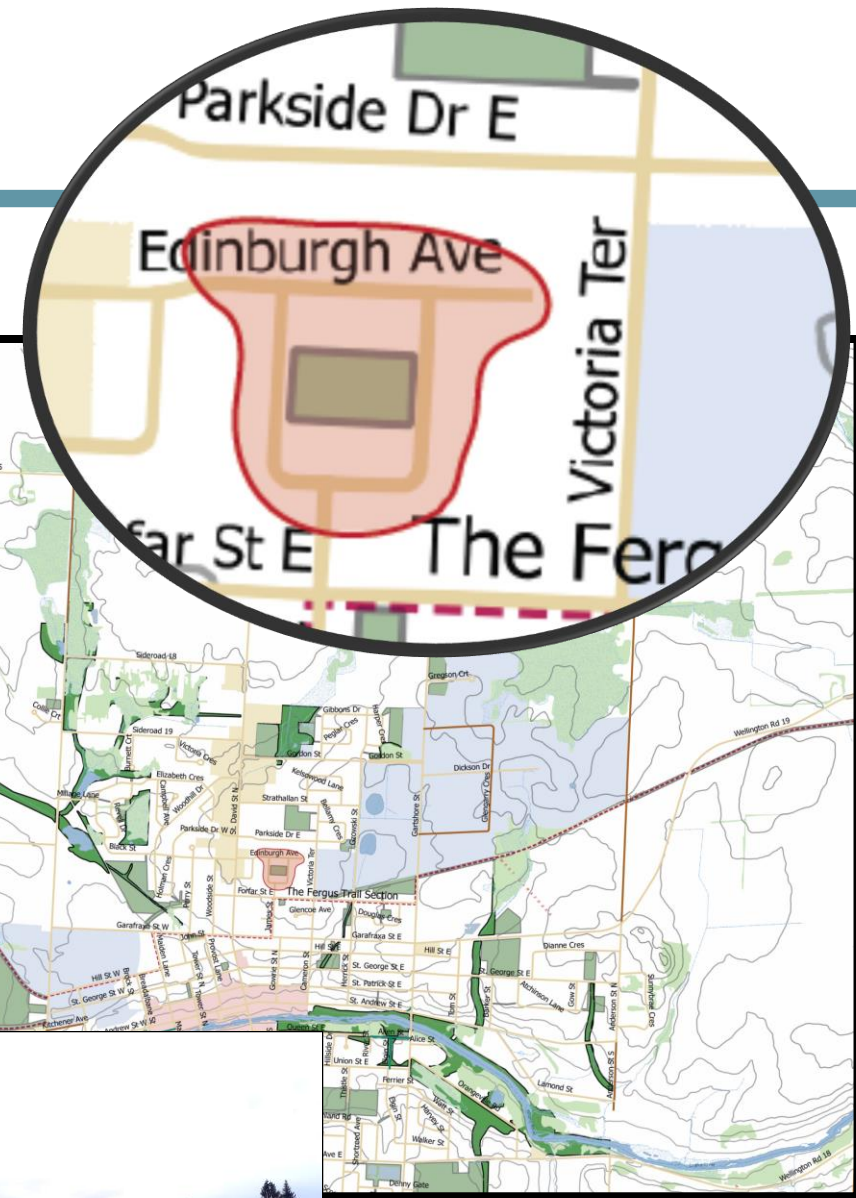
Associated Historical Themes: Urban Development, Community Development

Spatial Pattern Type: 

Scale: Small

UNESCO/OHT Category: Designed

Heritage Recognition: None





Pierpoint

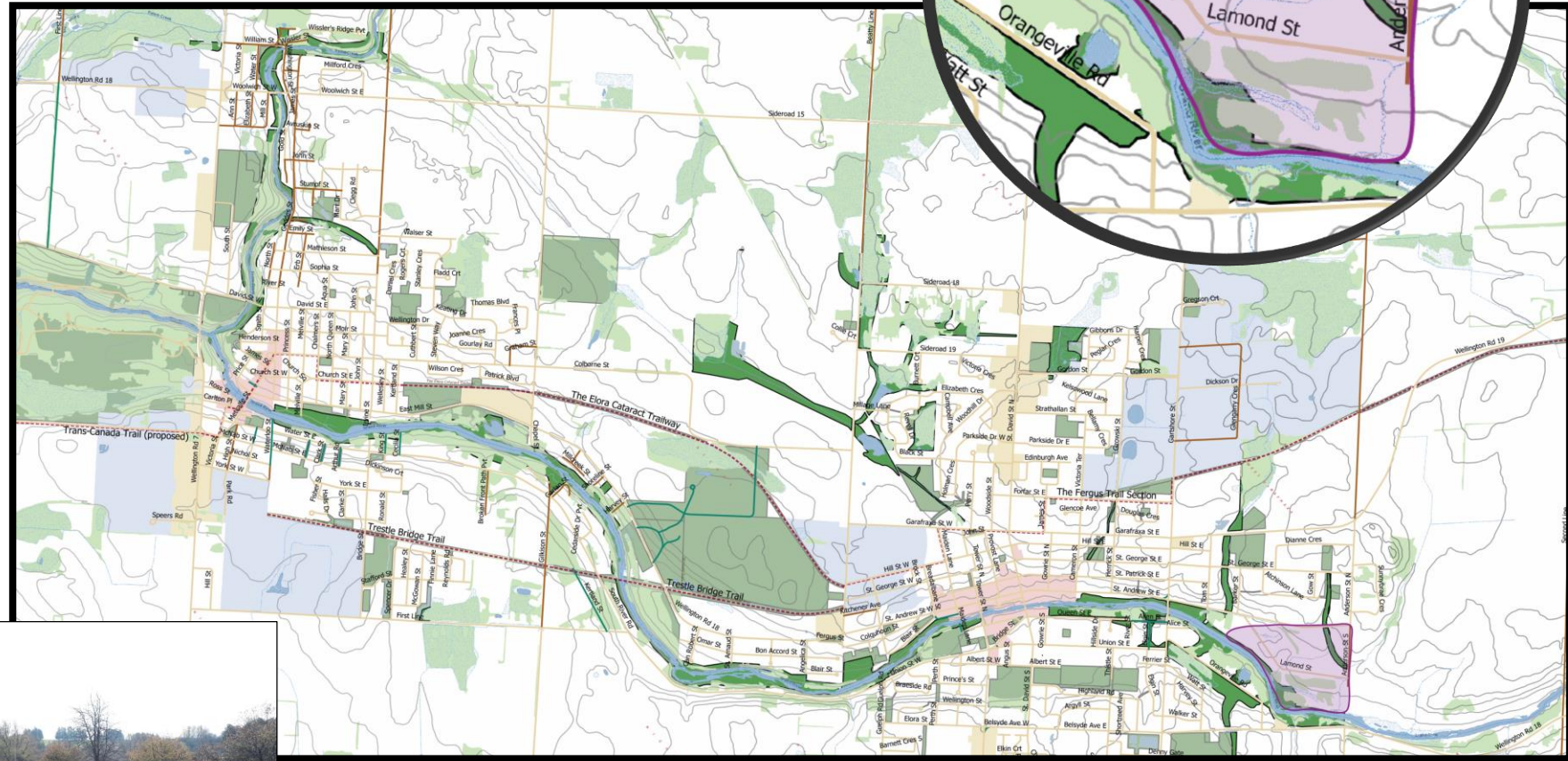
Associated Historical Themes: Settlement

Spatial Pattern Type: n/a

Scale: Medium

UNESCO Category: Associative

Heritage Recognition: None





Confederation Park & Trail System

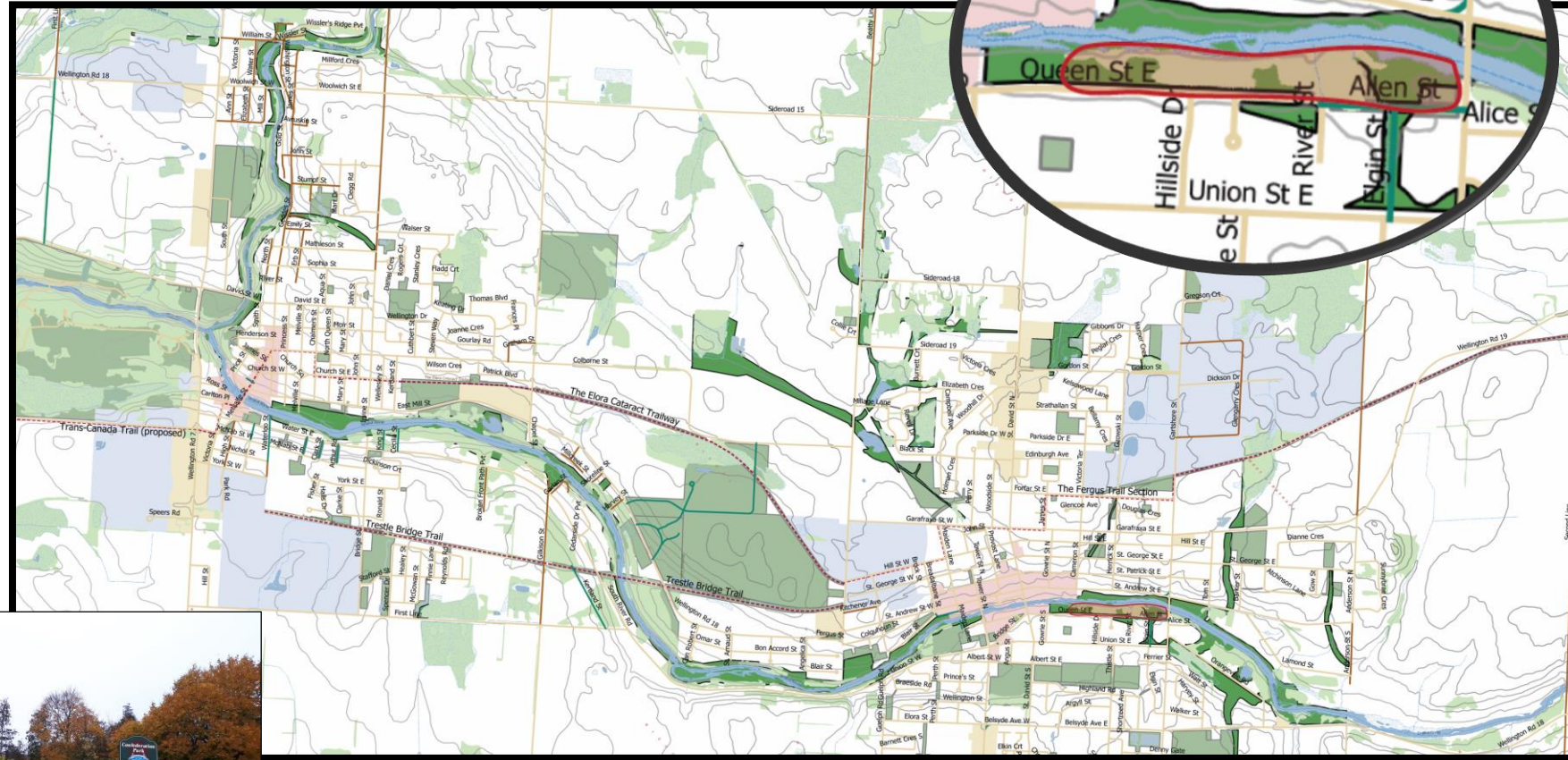
Associated Historical Themes: Settlement, Community Development, Nature

Spatial Pattern Type: 

Scale: Medium

UNESCO Category:
Evolved - Continuing

Heritage Recognition: None





Gow Park, Craighead, Blair Park & Arboretum

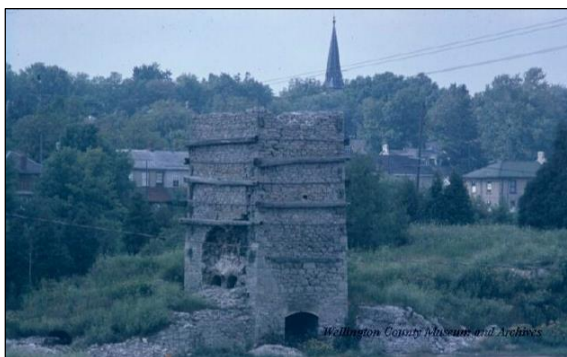
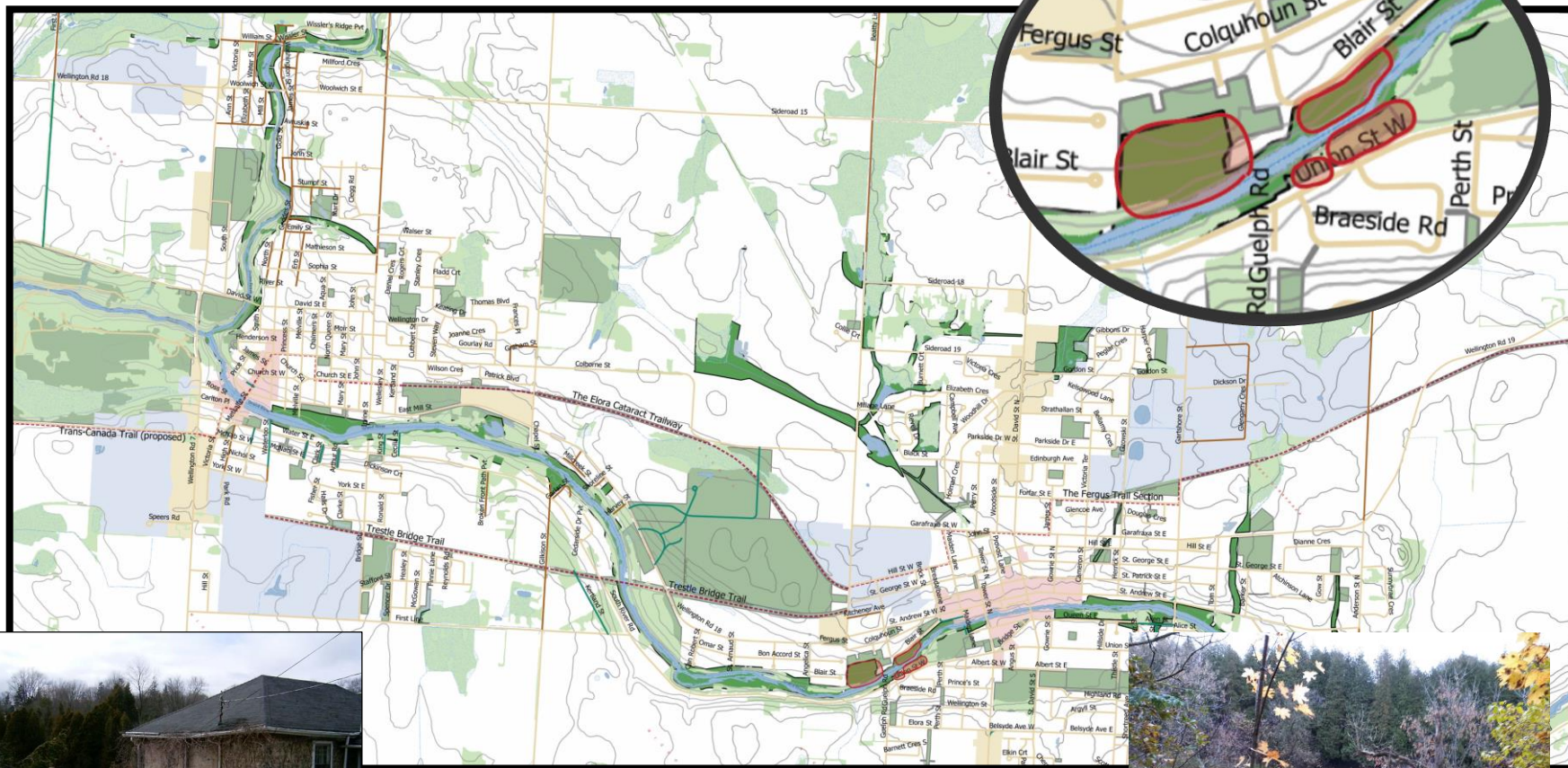
Associated Historical Themes: Settlement, Community Development, Nature

Spatial Pattern Type: 

Scale: Medium

UNESCO Category:
Evolved - Continuing

Heritage Recognition: Listed
property





Working Session

Table	Type	Cultural Heritage Landscapes
1	Downtowns	Downtown Elora Downtown Fergus
2	Grand River	Grand River and associated sites: -Wilson's Flats area -Elora Gorge -Elora Quarry -Shand Dam & Belwood Lake
3	Settlement	Belwood Aboyne and Allan Farmstead Pierpoint Salem
4	Residential Areas	Union Street East, Fergus Victory Housing, Fergus Beatty Brothers Factory and Residential Area Victoria Park and Victoria Cres, Elora
5	Parks and Open Spaces	Highland Park, Victoria Park and Belsyde Cemetery Gow Park, Craighead, Blair Park, Arboretum Elora/St. Mary's Cemetery
6	Trails and Roadways	Confederation Park and Trail System Elora Cataract Trailway South River Road Trestle Bridge Trailway

- Choose **3** tables to visit
- Answer **2** questions per table
- 14 minutes per table;
7 minutes per question



Questions for Each Candidate CHLs

1. What is significant about this landscape and/or what significant features should be recognized?
2. Do you agree/disagree with the preliminary boundary? How would you refine it? Why?



Q & A