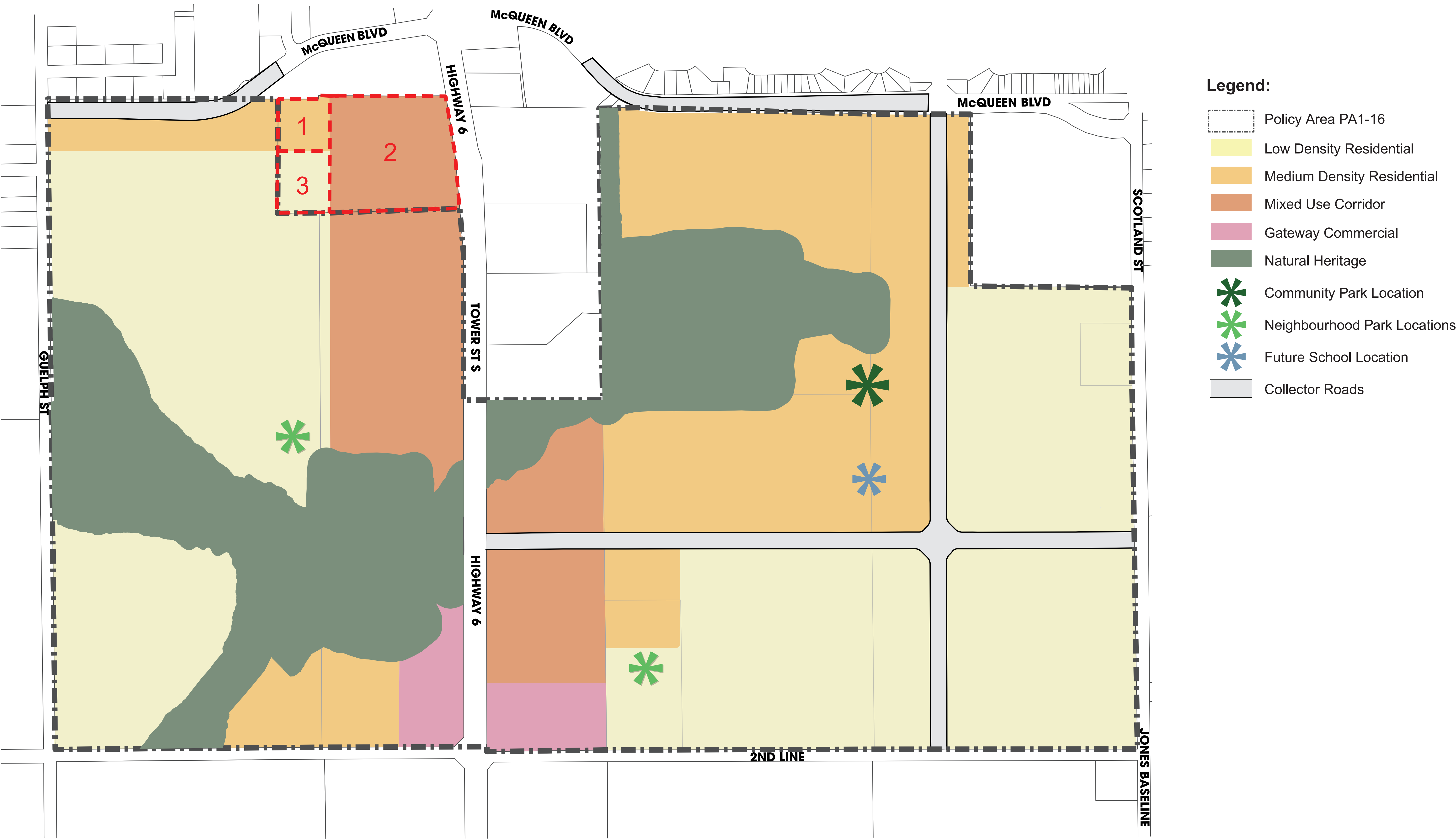


PREFERRED LAND USE PLAN



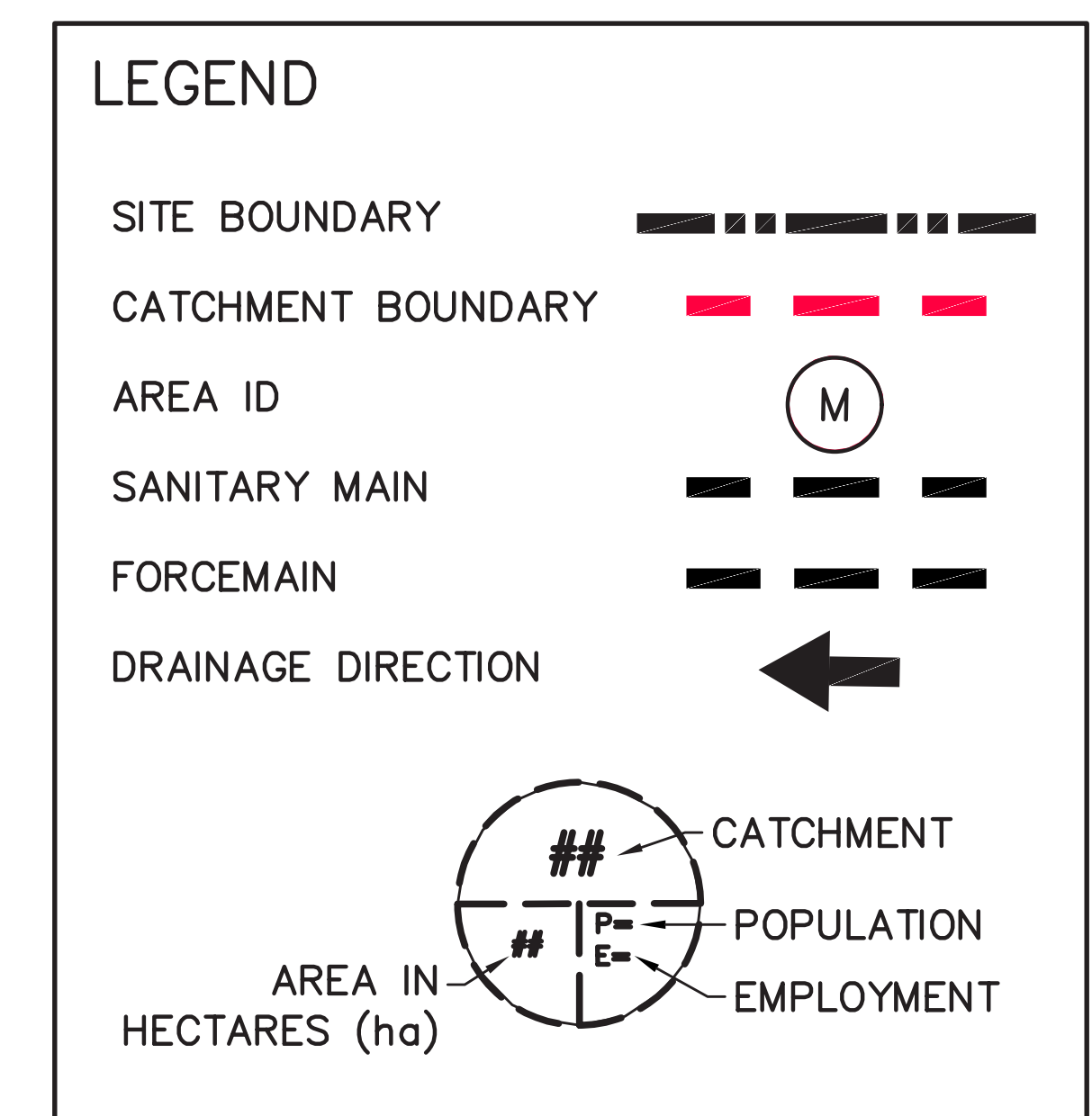
SECONDARY PLAN - LAND USE DESIGNATIONS



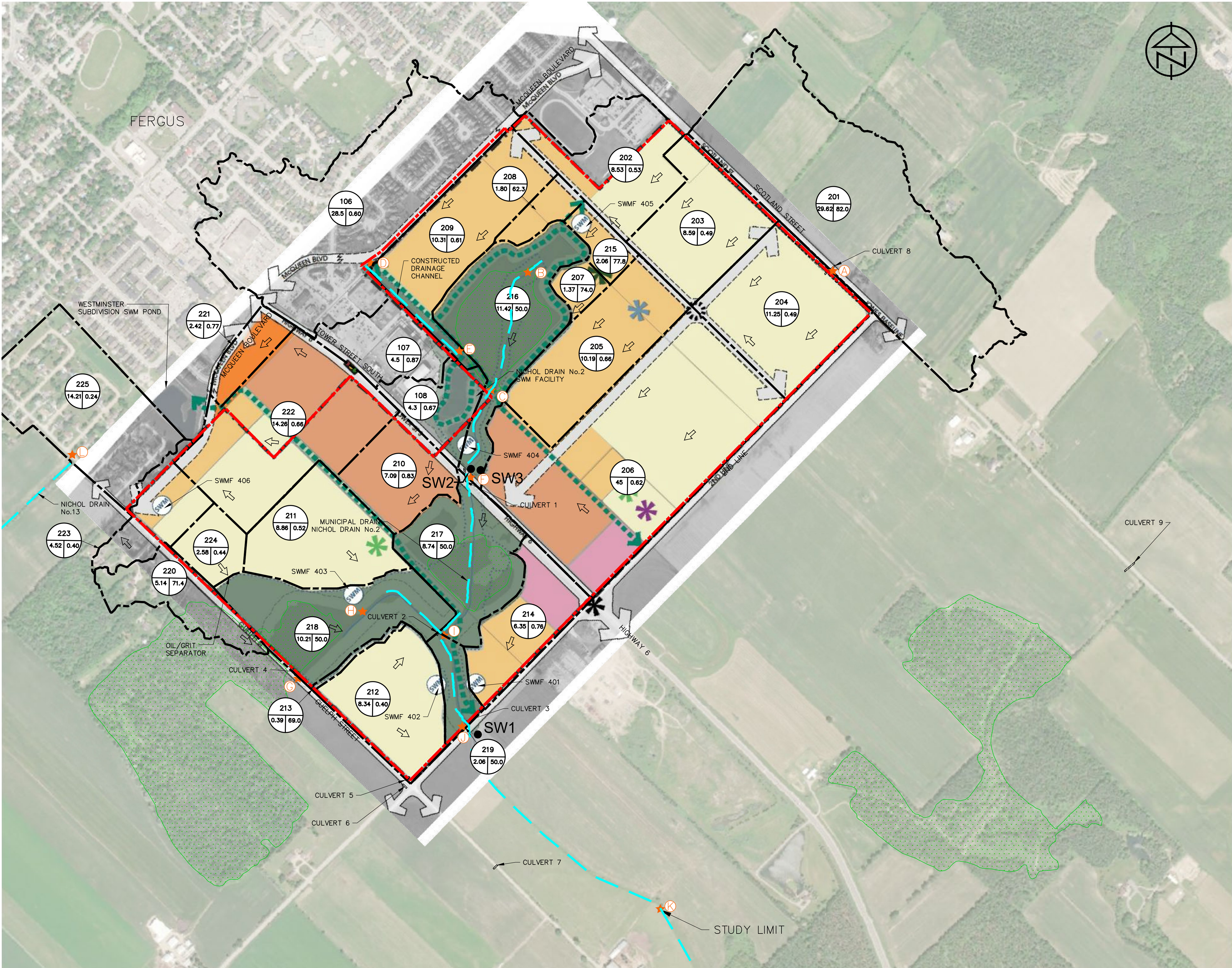
[illegible]

- UTILIZATION OF EXISTING INFRASTRUCTURE FOR STUDY AREA
- NEW GRAVITY SEWER FOR STUDY AREA TO UNION STREET PUMPING STATION
- NEW PUMPING STATION FOR STUDY AREA TO UNION STREET PUMPING STATION

NOTE: THE ALTERNATIVE ASSOCIATED
WITH THE GRAVITY SEWER OPTION IS
UNDER FURTHER REVIEW

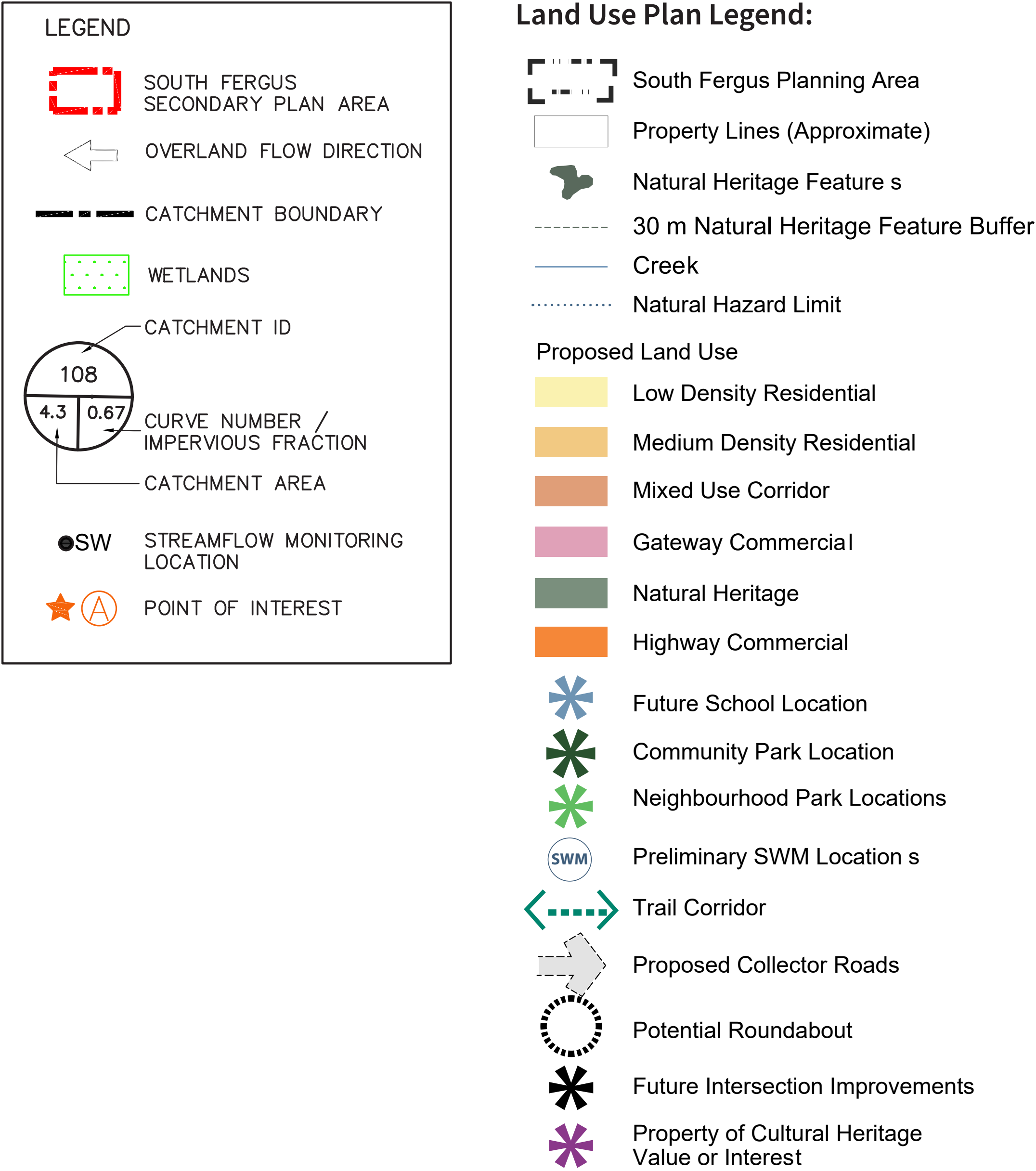


PREFERRED STORMWATER DRAINAGE PLAN



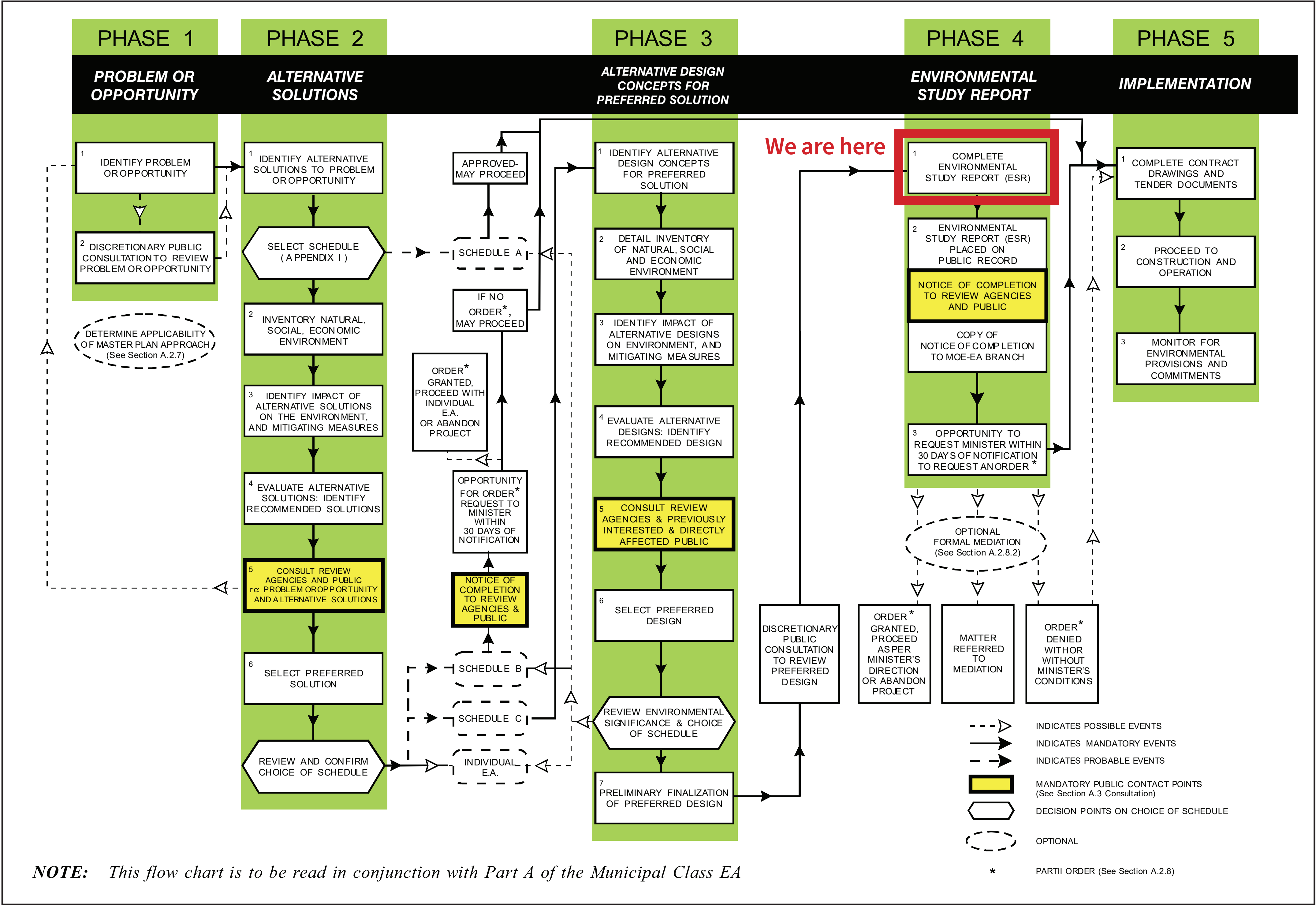
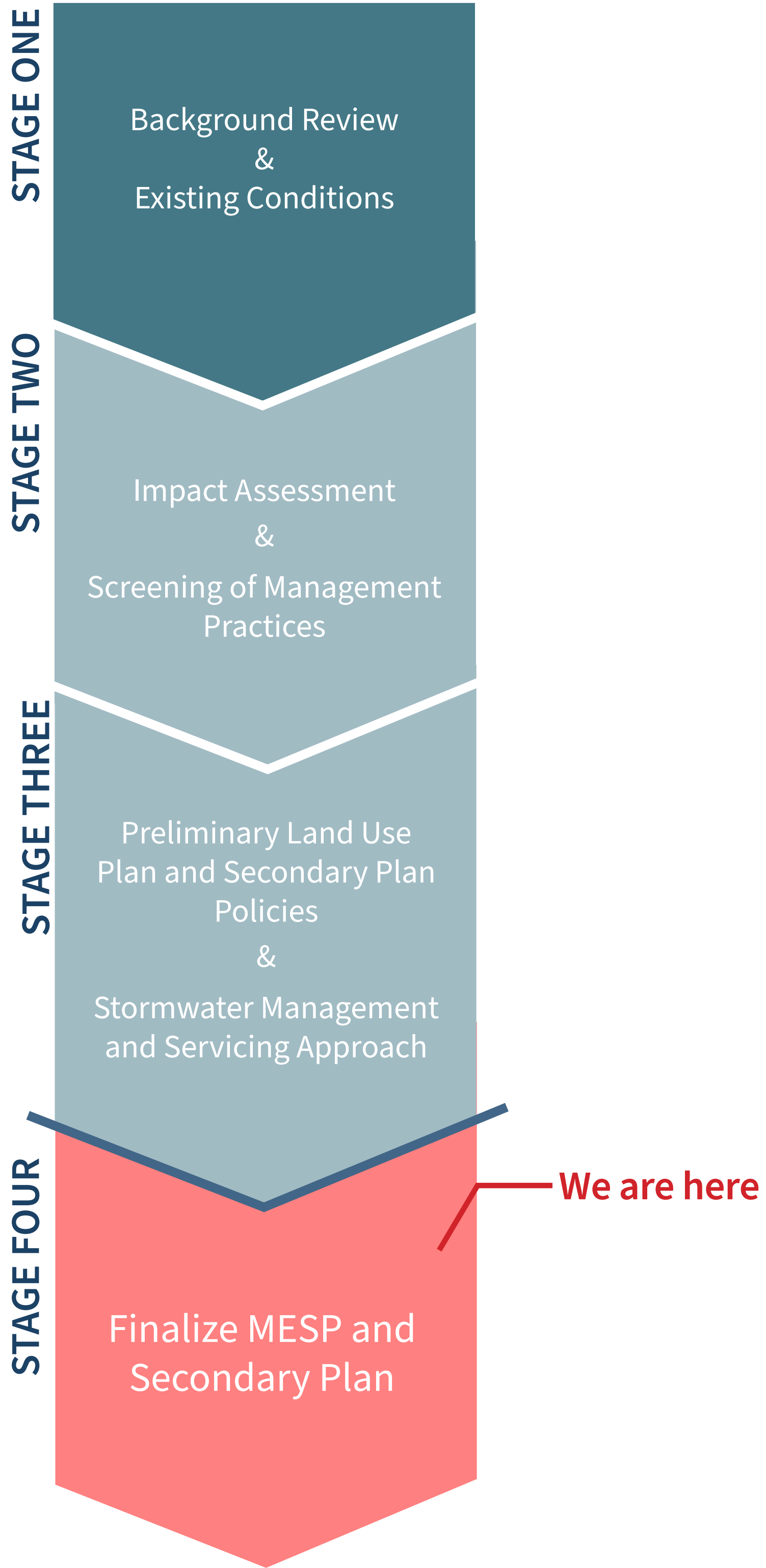
ALTERNATIVES EVALUATED TO DETERMINE
RECOMMENDED DESIGN:

- UTILIZATION OF EXISTING STORMWATER
MANAGEMENT FACILITIES
- DEVELOPMENT OF NEW STORMWATER
MANAGEMENT FACILITIES



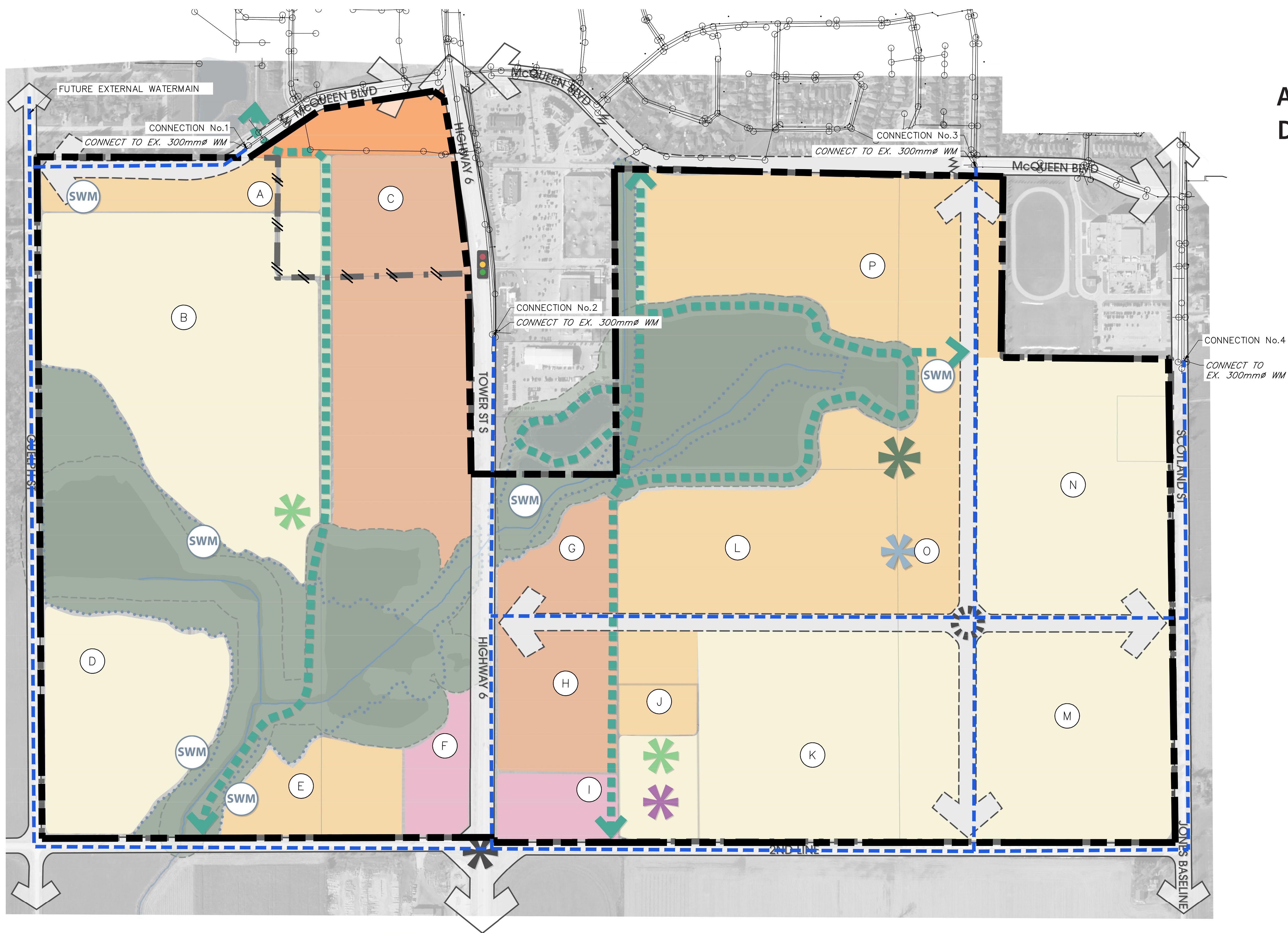
MESP & SECONDARY PLAN STUDY PROCESS

MUNICIPAL CLASS EA PLANNING AND DESIGN PROCESS



NOTE: IMPLEMENTATION (PHASE 5) WILL BE ADDRESSED THROUGH FUTURE PLANNING AND ENGINEERING PROCESSES

PREFERRED WATERMAIN LAYOUT



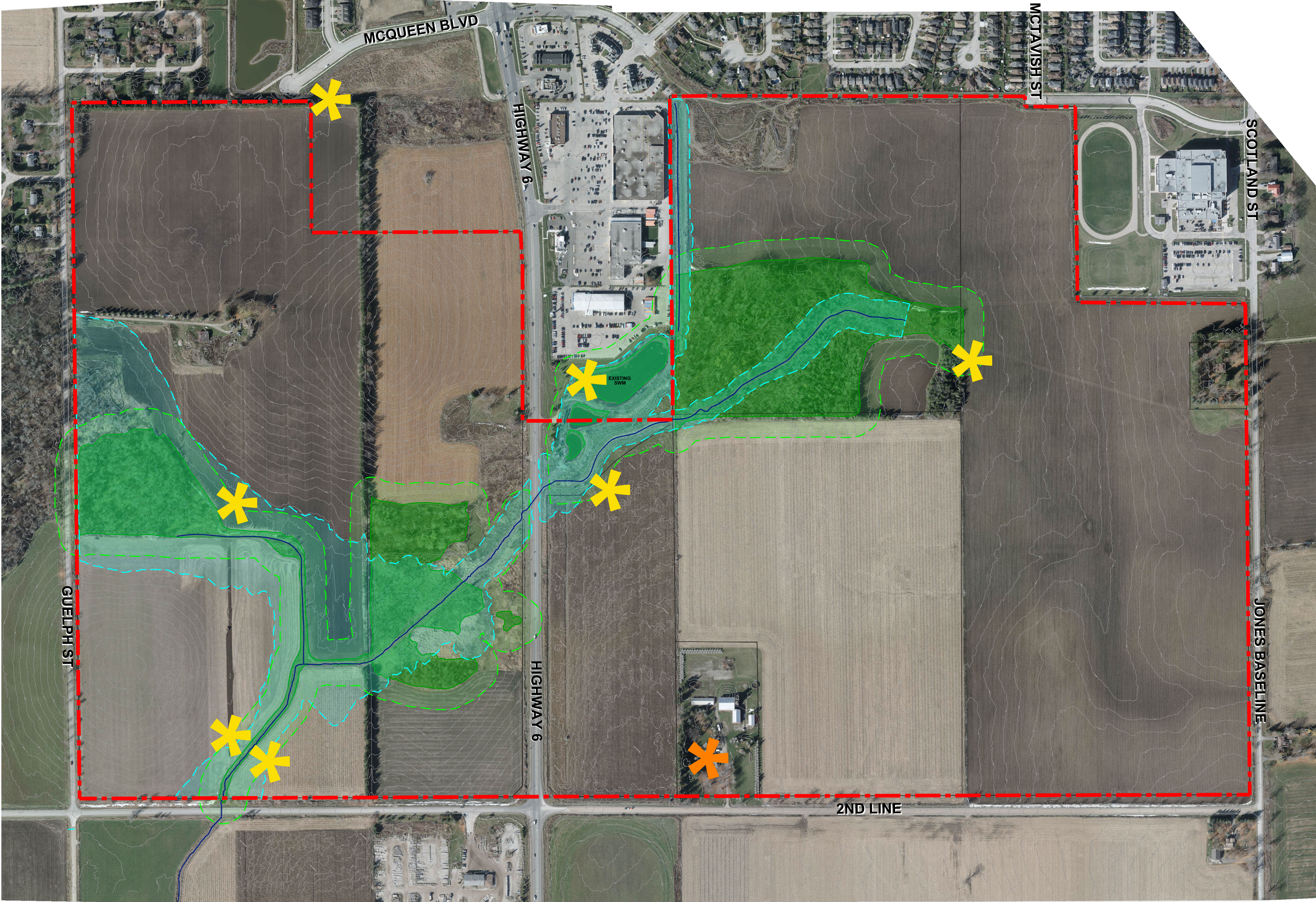
ALTERNATIVES EVALUATED TO DETERMINE RECOMMENDED DESIGN:

- DEVELOPMENT OF STUDY AREA WITH EXTENSIONS FOR FULL MUNICIPAL WATER SERVICE

LEGEND

SITE BOUNDARY	-----
PROPOSED 300mmØ TRUNK WATERMAIN	-----
AREA ID	(M)

EXISTING CONDITIONS



- Legend:
- Study Area (±153 ha)
 - Parcel Fabric*
 - Properties of Cultural Heritage Value or Interest
 - Existing Stormwater Management Facilities
 - Natural Heritage Features
 - 30 m Natural Heritage Feature Buffer
 - Natural Hazard Limit (Includes flood and erosion hazard limits)
 - Existing Municipal Drain/Watercourse